



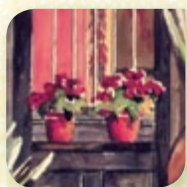
NATURE

1-2 Fall Plant Sale: *Fall is the Time to Plant*



ART

3-4 The Elinor Lamont Hallowell Collection
Chiles! | Featured Artist - L. Wren Walraven
Collection Spotlight | Small Works Exhibition
Upcoming Exhibitions



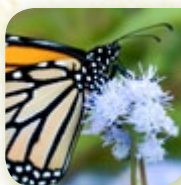
CULTURE

5-8 Chiles, Chocolate and Salsa!
Whole Foods 5% Donor Day
Butterflies!
Guatemalan Arts and Crafts Sale
Holiday Nights
Book Signing - Diana Madaras
Member Spotlight



CLASSES & WORKSHOPS

9-11 Outdoor "Living" Rooms | Gourd Wreath |
Afternoon Yoga | Fun and Frugal |
Landscapes After Dark |
Metallic Gourd Ornaments |
Print Making by Hand |
Tales of the Sonoran | Finding Wisdom in Our
Winter Desert



SPECIAL EVENTS

11 Three-Way Membership Swap
Butterflies of Tohono Chul
Reptile Ramble | Hawk Happening



TRAVEL ED-VENTURES

12-13 Navajo Arts and Culture
Wine Country Safari
Christmas in the Barrio

Fall Plant Sale

— COLD-HARDY, ARID-ADAPTED & NATIVE SPECIES —
get exclusive plants & expert advice

► Sat. | Oct. 11 | 9am - 5pm
► Sun. | Oct. 12 | 10am - 4pm

PAY NO SALES TAX

**BECOME A MEMBER
& GET 10% OFF**

FALL IS THE TIME TO PLANT

It may seem early, but planting in the fall gives your newly purchased plants the time they need to get established, ensuring that you'll have a fantastic spring display!

MEMBERS' PREVIEW

Wednesday Oct. 8, 12-6pm

Sale is located at 7211 N. Northern Ave., the east side of Tohono Chul



PHOTO © SUE CARNAHAN 2010 (FLICKR)



Tohono Chul
GARDENS • GALLERIES • BISTRO

520.742.6455 x0
TOHONCHUL.ORG

2 | nature

Fall Plant Sale – Fall is the time to plant!

Members' Preview: Wednesday | October 8 | 12 p.m. – 6 p.m.

General public: Saturday | October 11 | 9 a.m. – 5 p.m.

General public: Sunday | October 12 | 10 a.m. – 4 p.m.

Visit Tohono Chul's Fall Plant Sale to see our extensive offering of usual and unusual, native and arid-adapted plants from barrel cactus to gopher plants to penstemons and passion flowers.

Our Members' Only Preview hours will continue to be extended due to the ever-growing attendance and interest in this popular event. We encourage you to bring your own wagon, but we will have plenty on hand if you don't have one.

Those planning to attend go to the propagation area, our east side entrance, off of Northern Avenue at 7211 N. Northern Ave.



Fall is the time to plant! Planting flowering perennials such as penstemons in October may seem a little preemptive; big spring blooms are many months away. Spending a modest sum on new mesquite trees and planting them as winter approaches might seem like a risky bet. Anywhere else in the country you'd be right, but in the Sonoran Desert our mild fall weather, allows newly transplanted plants to get established in their new homes. By the time occasional light freezes hit in winter, the transplants are hardy enough to survive, and by spring they will be enjoying vigorous growth and, depending on the plant, putting out a vibrant flower display.



Jean B. Cly | *Ceremonial Basket* | sumac | Navajo

The Elinor Lamont Hallowell Collection of Patriotic Native American Art

On display through October 5 | Exhibit House Entry Gallery

This exhibition has been made possible through the generous gift of over 70 Native American artworks collected by long-time friend and patron of Tohono Chul, Mrs. Elinor Lamont Hallowell. Through early 20th century Plains Indian beadwork, contemporary Navajo baskets, and a variety of other finely crafted artworks, the exhibit weaves a complex story of the myriad relationships between people, country and culture. Over the last fifteen years, Mrs. Hallowell selectively acquired these patriotic-themed artworks during trips with Tohono Chul's education department to renowned locations throughout Arizona and New Mexico. It is our privilege to share this collection with visitors from all over the world and honor the artistic interpretations of this dynamic theme.

Chiles!

On display through November 9 | Exhibit House Main Gallery

Rich in flavor and in history, chile peppers have been part of the human diet for thousands of years. Encompassing a spectrum of colors, sizes, flavors and intensity of spice, the genus *Capsicum* was cultivated by our ancient ancestors and continues to be an important component in the cuisine of this region. This exhibition pays tribute to the cultural heritage and ethnobotanical legacy of the amazing chile pepper through energetic and colorful artworks in a range of media. Representations of chiles are partnered with narrative pieces, functional works and experimental forms that all collectively point in the direction of an ancient farm-to-table story, illustrating our multi-layered relationship with the mighty chile!



Marla von Ettenberg | *Chile Powder* | pom poms on canvas (cropped)

Featured Artist – L. Wren Walraven

On display through November 9 | Exhibit House Welcome Gallery

L. Wren Walraven is an illustrator and a fine artist who also has a passion for wildlife. Her many years of experience working in wildlife rehabilitation and bird banding greatly informs her colorful, dynamic work in both paint and mixed media. For over 10 years, the artist painted birds, banded them, ran bird surveys for the U.S. department of Fish & Wildlife, and created a wide range of designs and illustrations. This experience still informs her creative output, as evidenced by this exhibition of new works titled "Celebrate our Sonoran Desert Wildlife", which includes her signature bird subjects as well as other wildlife from the region.



Image(s): L Wren Walraven | *Buckhorn Bulwarks* | acrylic and molding paste on wood (cropped)

4 | art

Collection Spotlight

Acoma pottery

On display through November 9 | Exhibit House Welcome Gallery

During the last 50 years, Acoma potters have faced the challenge of balancing the pressures of a shifting economy with their dedication to their cultural traditions. In the 1970s and 1980s, the increasing demand for visual perfection in Southwest pottery drove many Acoma potters to shift from employing traditional hand-coiling techniques to utilizing kiln-fired (and often cast) greenware. As part of Tohono Chul's Permanent Collection, these exquisitely detailed vessels are representative of an artist's personal connection with tradition and innovation.



Pot with Butterfly design | Lynette Garcia (Acoma Pueblo, New Mexico) | Gift of Peggy Tanzer | ACNO: 2008.5.2

Jar with Kokopelli design | created by an unknown Acoma artist, New Mexico | Gift of the Estate of Agnes T. and Don L. Smith | ACNO: 98.1.95

Bowl with Bird design | Louise Amos (Acoma Pueblo, New Mexico) | Gift of the Estate of Agnes T. and Don L. Smith | ACNO: 98.1.94

Small Works Exhibition

October 10 – December 14 | Exhibit House Entry Gallery

Our Small Works exhibition returns! This invitational exhibition highlights the many artists who have made the exhibits at Tohono Chul shine throughout the past year. This is a chance to see work by over 100 of our highly-talented regional artists together in one gallery. Eclectic and energetic, this exhibition features sculpture, paintings, prints, and mixed media that are all under 12 inches in size and modestly priced. Additionally, the artwork on display will be changing periodically over the course of the exhibition, with new works making an appearance throughout, so return visits will offer chances to see even more artistic visions as they are expressed on a smaller scale.



Collage by Margaret Suchland (cropped)

Upcoming Exhibitions:

The Tree: *Myth, Symbol and Metaphor*

November 14 – February 15 | Exhibit House Main Gallery

This exhibition of work by regional artists explores personal, universal, and metaphorical connections with trees, including trees of life, family trees, and age-old myths.

(Image Left (not appearing in *The Tree: Myth, Symbol and Metaphor*): Henry Fox Talbot | *An Oak Tree in Winter 1842-1842* | Salted paper print

Featured Artist – Carolee Asia

November 14 – February 15 | Exhibit House Welcome Gallery



Chiles, Chocolate and Salsa!

Saturday & Sunday

October 25 & 26 | 10 a.m. – 4 p.m.

\$5 members | \$12 general public (children 12 and under free)

It's been more than a decade since Tucsonans have been able to enjoy the food, crafts and festival atmosphere of La Fiesta de los Chiles as conceived by the Tucson Botanical Gardens. We think it is long past time that this tradition was revived, so we are crafting our own homage to the cult of the fiery chile—and decadent chocolate—two of the ingredients that define life in the Southwest! During the day, vendors will feature chile and Southwest-inspired crafts and chile and chocolate-enhanced foodstuffs and culinary delights—everything from hand-ground moles and chile-flavored beers to chile shaped pottery and chile print

aprons. There will be food trucks, chile roasters and ornamental and edible chile plants for sale, too. Weekend musical entertainment includes youthful mariachis, Andean folk music and Native American



flutes. Come and treat yourself! Sponsored by Edible Baja and KXCI Community Radio.

Salsa the Night Away – Rafael Moreno & Descarga!

Saturday | October 25 | 7 p.m.

Performance Garden

\$15 members | \$25 general public (includes admission to the festival)

Founded in 1992 as a small Latin Jazz group, Descarga has grown into a ten-piece band under the creative direction of Rafael Moreno. During the evening, expect the vibrant stylings of Salsa, Cumbia and Merengue as well as Latin Jazz instrumentals and, of course, some original Descarga compositions! The Mobile Bistro will be on hand beginning at 6pm with a chile-inspired menu and a cash bar featuring chile infused beers and other libations. For Tickets Call 520.742.6455 x0



Whole Foods 5% Donor Day to Benefit Tohono Chul

Tuesday | October 7 | Whole Foods Open to Close

In addition to other charitable giving opportunities, Whole Foods host a “5% Days” twice a year, where five percent of the day’s net sales are donated to a local non-profit or educational organization. We hope you take this opportunity to purchase your favorite Whole Food items, or maybe even explore the store for the first time. Treat yourself while helping nourish Tohono Chul!

6 | culture

Butterflies!

Saturday | November 15

11 a.m. – 1 p.m.

Docent and author Sue Feyrer releases her latest book – *Butterflies of Tohono Chul*. This handy field guide includes photos of the most common butterflies (and their caterpillars) found on the grounds, along with lists of the plants they love best, both larval food plants and nectar plants for the adults. Stop by La Entrada Greenhouse and meet Sue – she'll be happy to sign your copy! We're also offering additional butterfly tours this day at 11am, 11:30 a.m., 12 p.m., 12:30 p.m. and 1 p.m (free with admission) and a special "Stories in the Garden for Children" in the Children's Ramada. And while you're in the Greenhouse, don't forget to make your own butterfly garden plant selections from the hundreds available. Free with admission



Guatemalan Arts and Crafts Sale

Friday & Saturday | November 7 & 8 | 10 a.m. – 4 p.m.

Children's Ramada

Mayan women of Guatemala live in the mountain villages of their ancestors, weaving colorful textiles using traditional back-strap looms. The intricate patterns of their weavings are both ancient and modern, reflecting symbols of the pre-Columbian past and the spiritualism of the weaver, through patterns revealed in dreams. Offered for sale at this special trunk show will be an array of clothing from flowered huipiles (square-cut blouses) to colorful rebozos (shawls), as well as fabric on the bolt, contemporary purses, vests, table runners and colorful beaded jewelry. Free admission during the sale.



Holiday Nights **Nearly a Million Lights!**

November 28 & 29 | 5:30 – 8:30 p.m.

December 5 & 6 | 5:30 – 8:30 p.m.

December 12 & 13 | 5:30 – 8:30 p.m.

Since 2002, Tohono Chul has hosted Holiday Nights, a family-fun evening that has become a much loved Tucson tradition. One of the first major

events of the holiday season, Holiday Nights became so popular that it has been expanded to three weekends beginning Thanksgiving weekend.

Guests will stroll through the grounds under a nearly a million twinkling lights, sip hot cider, enjoy tasty holiday treats and are joyfully entertained by music and dance performances throughout the evening.

The Garden Bistro will be open for dinner during Holiday Nights, offering an exceptional holiday menu. Call 520.742.6455 x501 for dinner reservations.

TO PURCHASE HOLIDAY NIGHTS TICKETS PLEASE CALL 520.742.6455 x0

- ▶ Tickets purchased before November 14: \$8 for members, \$12 for general public
- ▶ Tickets purchased after November 14: \$10 for members, \$15 for general public
- ▶ \$2 for children under 13



Cover image from Diana Madaras' Book *Private Spaces*

Book Signing – Diana Madaras, *Private Spaces*

Tuesday | November 11 | 11 a.m. – 2 p.m. | La Fuente Museum Shop courtyard

Diana Madaras will be signing copies of her latest book *Private Spaces*. Artwork, notecards and other gifts will be on sale from the treasures of the La Fuente Museum Shop. Diana will also be giving two short talks about her new book at 11:30 and 1:30 in the La Fuente Museum Shop Courtyard

PRAISE FOR *PRIVATE SPACES*:

Diana Madaras is becoming a legend in her own time. Few are the artists who can inspire emotions through art. Diana is one of the few. – Clive Cussler, New York Times Best Selling Author and Madaras collector.

*Throughout, *Private Spaces* is brought to life by Diana's intimate photos and 152 colorful paintings. The word vibrant comes to mind. It's a masterpiece.* – Barbara McNichol, editor, Barbara McNichol Editorial

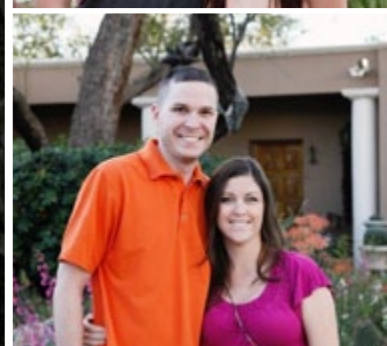
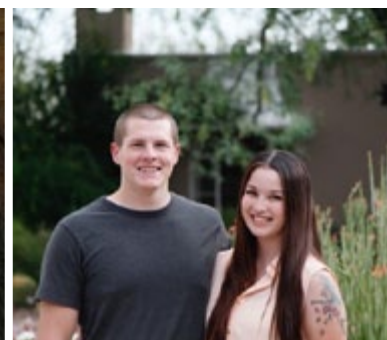
Member Spotlight Jeffrey and Barbara Minker

The idea came to them after watching a Public Television special about the hardships of young people in the military being deployed overseas.

Jeffrey and Barbara Minker, long time Tohono Chul members and supporters, wanted to do something for these young military personnel—and with Davis Monthan Air Force Base nearby, the idea could take root.



Jeffrey and Barbara Minker



Two couples hosted by the Minkers

"We live just across the street from Tohono Chul and the Garden Bistro," says Jeffrey, "with a two-bedroom two-bath guesthouse on the property. So we thought, we could give these couples a magical weekend like nothing they'd ever experienced."

Starting in April 2013, Jeffrey and Barbara began bringing couples either waiting to be deployed, or returning from deployment, to their guesthouse for a weekend. They welcome the couples with a wine and cheese gathering at their home, then leave them to enjoy each other's company in the guesthouse. In addition to breakfast at the Bistro, they're given guest

passes for Tohono Chul. "This year we had a couple staying with us when Bloom Night was announced. So they were thrilled when that became part of their weekend package."

Some of Tucson's finest restaurants have donated all-inclusive dinners for the couples: Wildflower, Flemings, North, The Public House, Kingfisher, Blue Fin, Tavolino, Vivace, Vero Amore, and Hacienda del Sol. And a number of Tucson hotels and resorts have donated weekend stays.

Jeffrey and Barbara have hosted about 20 couples since they started the program.

"It's been very rewarding to see how much they appreciate what we're able to offer. They write us thank you notes and all of them tell us how much they enjoyed Tohono Chul. One couple presented us with a gift of a potted cactus they bought at the Greenhouse."

In addition to participating in the Minker's program, Tohono Chul offers a discounted annual membership for enlisted military and discounted regular admissions for those who are not members. For the past three summers, we have been part of the nationwide Blue Star Museum program in offering free admission to all active duty military and their families from Memorial Day through Labor Day.



Outdoor “Living” Rooms – *The Latest Design Trend*

Saturday | October 4 | 10 a.m. | Education Center Classroom #1

Today landscape designers are blurring the lines between indoors and out, transforming simple landscape into extensions of indoor living space. Have you longed for your own open-air retreat, but are unsure where to begin? Elizabeth Przygoda of Boxhill Design shows you how to create a luxurious extension of your indoor living space, doubling your enjoyment of your home with increased square footage in practical and useable outdoor “living” rooms. \$6 members | \$10 general public



Gourd Wreath

Saturday | October 25 | 9 a.m. – 4 p.m. | Education Center Classroom #2

Inspired by the Southwest, this earthy wreath features small ornamental gourds colored with water-based and alcohol inks, devil’s claw and a variety of other dried botanicals from the Sonoran Desert. Led by gourd artist Sue Brogdon, the workshop’s end result is a wreath perfect for both holiday and year-round décor. Workshop fee includes all gourds (cleaned and drilled), botanicals, 36” grape vine wreath, water-based and alcohol inks, sealant, wire and wire wrapping tape; students should bring plastic or latex gloves and a wire cutter. \$95 members | \$110 general public



“Fall Back” with Afternoon Yoga in the Park!

Wednesdays | October 15 – November 19 | 4 – 5 p.m. | Children’s Ramada

Get back into a healthy routine by joining Barbara Sherman, registered yoga instructor, for an hour of gentle yoga asana practice in the outdoors! Open your senses to an understanding of our connection to the earth. Please bring your own mat. \$7 members | \$7 plus cost of admission for the general public



Fun and Frugal

Saturday | November 1 | 10 a.m. | Education Center Classroom #1

Believe it or not, creativity is more important than a big budget when crafting a delightful and distinctive desert garden. Greg Corman of Gardening Insights discusses how he and others have built engaging garden spaces using far more imagination than money. With examples from all over Tucson, he includes ideas for garden design and installation, planting and maintenance, plus features attractive to both humans and animals, wild and domestic. \$6 members | \$10 general public



Landscapes After Dark – *Lighting Design to Expand Nighttime Living Areas*

Thursday | November 6 | 7 p.m. | Education Center Classroom #1

Landscape lighting in the desert is an art and, when designed properly, can create visual mystery and excitement while also extending outdoor living areas, physically and visually. Shelly Ann Abbott, MLA, award-winning Master of Landscape Architecture, illustrates how putting thought and planning into your outdoor lighting scheme can turn your landscape into a knockout with dramatic and unique features. Kris Klein of FX Luminaire will be on hand with a live demo in the Desert Living Courtyard. \$6 members | \$10 general public



Metallic Gourd Ornaments for the Holidays

Saturday | November 8 | 9 a.m. – 1 p.m. | Education Center Classroom #2

Just in time for the holidays, gourd artist Sue Brogdon is back to teach participants how to work with alcohol inks and other finishes such as glazes, metallic waxes and metallic foil to create three unique holiday gourd ornaments. Adorned with a modified wire wrap technique and beads to add a sophisticated touch, they will be ready for decorating or to give as a gift. Materials provided; but please bring latex or plastic gloves, a jewelry wire cutter and jewelry grade flat-nosed pliers (if you have them). \$55 members | \$70 general public



Print Making by Hand

Mon. – Wed. | Nov. 10 – 12 | 10 a.m. – 4 p.m. | Education Center Classroom #2

In this new three-day workshop Kath Macaulay, known nationally for her Pocket Sketching, shares some history of the ancient art form of print making and helps students create their own prints just in time for holiday cards and gifts. Abstract or realistic, participants first sketch an image on paper or directly onto a block (wood or linoleum or other), incise it, ink it and pull a print. Or build on a surface, ink it and print it. Supplies will be available for purchase (approx. \$75) at the workshop or bring your own; when registering, please provide an email address and a supply list will be sent. \$286 members | \$300 general public



Tales of the Sonoran Desert – *An Afternoon of Storytelling*

Sunday | November 16 | 2 p.m. | Education Center Classroom #1

Author and storyteller Joyce Story gives voice to the plants and animals of the Sonoran Desert through her original tales. Journey with her through a land of wonders and meet a guilt-stricken coyote who pleads with the moon or an ocotillo whose flowers are a tribute to its compassion. Cunningly woven into these creative stories are subtle lessons about our relationships with the land and each other, enhancing understanding and respect for the desert and its inhabitants. free with admission



Finding Wisdom in Our Winter Desert – A Courage & Renewal Workshop

Saturday | December 13 | 9 a.m. – 1 p.m. | Education Center Classroom #2

Through a variety of activities — poetry, journaling, nature walks and discussion — explore what nature's landscape can teach us about ourselves. Professor David Sadker invites you to reconnect with your inner wisdom and with nature in ways that will refresh and sustain. (For more about Courage & Renewal, visit <http://www.sadker.org/courage.html>) \$35 members | \$50 general public

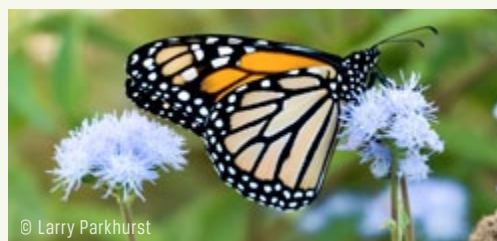


Three-Way Membership Swap

Your Tohono Chul, Tucson Botanical Gardens or Tucson Museum of Art Membership is Honored at All Three Institutions

Valid Through September 30

Now through September 30, members of Tohono Chul, Tucson Botanical Gardens and Tucson Museum of Art can show their membership card and receive free admission at any of the three participating institutions! Please note, this reciprocity agreement does not include other member benefits such as discounts or admission to special events.



THREE SPECIAL CREATURE FEATURES! Butterflies of Tohono Chul

Saturdays | September 6 – November 29 | 11 a.m.

Nature lovers, shutterbugs and bug lovers will get an in-depth glimpse of some of the most engaging creatures in the Sonoran Desert, butterflies!



Reptile Ramble

Fridays | Continuing through October 31 | 10 a.m. | Overlook

Reptile Ramble lets you walk on the scaly and slithery side of the wild side! Get close to, or touch and hold resident reptiles including snakes and tortoises.



Hawk Happening

2nd & 4th Wed. | Oct. 8 – Nov. 26 & Dec. 10 & 17 | 11 a.m. – 1 p.m.
Children's Ramada

Traveling avian ambassador Sueño and her human, Kathie Schroeder, are back this fall to share secrets in the lives of the Southwest's amazing Harris' hawks.



Tohono Chul
GARDENS • GALLERIES • BISTRO

2015 • CALENDAR

Tohono Chul's 2015 Calendar

Back by popular demand, we proudly present Tohono Chul's 2015 calendar.

Always beautiful, and filled with the best the Sonoran Desert has to offer, our

calendar will soon be available for sale on our dramatically improved online shopping cart, and in our museum shops.

Navajo Arts and Culture – Monument Valley & Canyon de Chelly – with Mark Bahti

October 16 – 20

This is the land of the Navajo, a place out of time shaped by the forces of nature and sacred to the lives of a proud and resilient people. With our traveling scholar, Mark Bahti, experience selected treasures of both land and culture, some renowned and others off the beaten path as we journey through northeastern Arizona and southern Utah. A 2nd generation Indian trader and author, Bahti's knowledge of the region extends far beyond the academic, reflecting

a lifetime spent among the Navajo. Consider the significance of landscape in Navajo culture, from the red spires of Monument Valley to the rugged depths of Canyon de Chelly. Meet generations both old and new of artisans and visionaries, traders and teachers, all instrumental in the revival of Navajo culture and the development of its art forms – from distinctly patterned rugs and contemporary baskets to hand worked silver and whimsical folk art. Along with Mark Bahti, your hosts for

this travel ed-venture are Piet and Mary Van de Mark of Baja's Frontier Tours. Cost includes spacious and comfortable van transportation with window seats for everyone to take advantage of the incredible views along our scenic route, accommodations and a traditional Navajo meal to be shared with new friends. Travel with us and bring back treasured memories of the real Southwest.

\$1995 members (\$285 single supplement)

12 | travel ed-ventures

REGISTRATION IS REQUIRED.
CALL 520.742.6455 X0

Wine Country Safari

Sunday, November 9 | 8:30 a.m. – 5:30 p.m.

World-class vintages are being produced in the rolling grasslands of southeastern Arizona by wineries with names like Arizona Hops, Dos Cabezas and Flying Leap, and world-class cuisine is coming out of the kitchen at Overland Trout — so how could we not put together a sampling safari to Sonoita and Elgin?! Our first stop is Arizona Hops and Vines run by “two crazy sisters” where quotes from Jack Kerouac and Frida Kahlo adorn the walls and Cheetos are a suggested wine pairing! Then it’s Sunday Brunch at Overland Trout (cowboy slang for bacon) and an opportunity to sample Chef Greg LaPrad’s take on “the culinary heritage of Arizona’s borderlands.” After brunch we head next door to Dos Cabezas Wineworks, originally founded in 1995 by Arizona

wine pioneer Al Buhl and now owned by the Bostock family, for a flight of award-winning wines bottled in Sonoita from grapes grown there and the Cimarron Vineyard in Willcox. We end the day at Flying Leap Vineyards for tastings and a tour. Formerly Canelo Hills Vineyard and Winery, new owners Mark Beres and Marc Moeller are growing a select portfolio and red and white grapes and producing wines with names like Monsoon Red and Head Over Heels. Take the day off to sample some of the best wines Baja Arizona has to offer and let us be your designated driver! Cost includes transportation, wine tastings and brunch.

\$135 members



Delight in the company of well-known Tucson author/oral historian Patricia Preciado Martin as we visit barrios, markets and historic sites for a glimpse of Tucson’s rich Mexican history and Christmas traditions. Hosted by Piet and Mary Van de Mark

Christmas in the Barrio: Hearts & History with Patricia Preciado Martin

Tuesday, December 2 | 8 a.m. – 5 p.m.

of Baja’s Frontier Tours, this uniquely personal and memorable day is one to share with families and friends. Martin’s treasured stories are rooted in oral histories she has collected during decades of observing and sharing the customs of daily life, including religious observations, fiestas and most especially the

food of her beloved Mexican-American people. Midday, we pause to savor lunch at a favorite local Mexican restaurant. Cost includes transportation and lunch. There is moderate walking but great photo opportunities.

\$139 members

TRAVEL PAYMENT, REGISTRATION & CANCELLATION POLICIES

- ▶ Register for Tohono Chul travel, classes & workshops by calling 520.742.6455 x0
- ▶ Registration is required for Tohono Chul travel, classes & workshops.
- ▶ Travel cancellation within two weeks of registration = full refund
- ▶ Travel cancellation at least two weeks before date of trip = 50% refund
- ▶ Travel cancellation less than two weeks before date of trip = refund only if your space can be filled
- ▶ Travel cancellation policies for multi-day trips vary with the trip

TOURS

Tours are free to members and included in the price of admission for non-members. If you would like to schedule a private group tour call 520.742.6455 x 235

General Tours

Walk in the Park

Experience Tohono Chul while learning some basic Sonoran Desert ecology.

Mon. – Sat. at 9 a.m. | Mon. – Sat. at 9 a.m. & 1 p.m. beginning Oct. 1

Birds of Tohono Chul

Learn to identify residents and those “just passing through,” plus information on habits and habitat.

Mon., Wed., Fri. & Sat. at 8:00 a.m.
8:30 a.m. beginning Oct. 1

Art in the Park

An in-depth and behind-the-scenes look at our changing art and cultural exhibits.

Tue. & Thur. at 11 a.m. | Sun. at 2 p.m.

Specialty Tours

Stories in the Garden

Traditional and original stories about the desert and its creatures in the Children's Ramada. Tue., 10 a.m.

Reptile Ramble

Learn to identify resident reptiles and find the answer to the age-old question—“why do lizards do push-ups?”
Fri. at 10 a.m. through Oct. 31

Butterflies of Tohono Chul

Explore the seasonal world of butterflies and discover the plants favored by caterpillars and adults. Sat. at 11 a.m., Sept. 6 – Nov. 29

Connecting Plants and People

Discover the edible and useful plants of the Sonoran Desert. Sept. 6, Oct. 4, Nov. 1 at 10 a.m.

The Great Xeriscape

Unearth the how-to's for using native and arid-adapted plants in water-saving landscapes. Sept. 20, Oct. 18, Nov. 15 at 10 a.m.

Eco-Stations at the Overlook

9 a.m. – 11 a.m. through Sept. 29
10 a.m. – 12 p.m. beginning Oct. 1

Winged Things

Mondays – from birds to butterflies, a look at the winged things of the skies

Wild Woolies

Tuesdays – the warm, hairy beasts of our deserts

Rocks and Ruins

Wednesdays – explore Tucson Basin geology and archaeology

Who Eats Whom

Thursdays – an interactive approach to a desert food chain

Creepy Crawlies

Fridays – sometimes scary, but always cool! – spiders, scorpions, snakes and lizards

Prickly Plants

Saturdays – spiny and downright hostile, plants are well adapted to our desert environment

MAY – SEPTEMBER ADMISSION PRICES

- \$8 adult ▪ \$6 senior
- \$4 military & student (with ID)
- \$2 children ages 5 – 12

OCTOBER – APRIL ADMISSION PRICES

- \$10 adult ▪ \$8 senior
- \$5 military & student (with ID)
- \$3 children ages 5 – 12

With Our Compliments

Admission is free on select national holidays.



Friend us on Facebook.



Follow us on Twitter.



Tohono Chul

GARDENS • GALLERIES • BISTRO

7366 N. PASEO DEL NORTE, TUCSON, AZ 85704
520.742.6455 | WWW.TOHOCHUL.ORG

Fall Plant Sale

— COLD-HARDY, ARID-ADAPTED & NATIVE SPECIES —
get exclusive plants & expert advice

► Sat. | Oct. 11 | 9am - 5pm

► Sun. | Oct. 12 | 10am - 4pm

PAY NO SALES TAX

**BECOME A MEMBER
& GET 10% OFF**

FALL IS THE TIME TO PLANT

It may seem early, but planting in the fall gives your newly purchased plants the time they need to get established, ensuring that you'll have a fantastic spring display!

MEMBERS' PREVIEW

Wednesday Oct. 8, 12-6pm

Sale is located at 7211 N. Northern Ave., the east side of Tohono Chul



Tohono Chul
GARDENS • GALLERIES • BISTRO

520.742.6455 x0
TOHOCHUL.ORG

PHOTO: JILL E. CARRAHAN 2010 (STILLER)



CHILES CHOCOLATE & SALSA FESTIVAL

OCT 25 & 26

10 A.M. - 4 P.M.

SATURDAY CONCERT
AT 7 P.M. FEATURING
**RAFAEL MORENO
& DESCARGA**

FESTIVAL TICKETS \$5 MEMBERS | \$12 GENERAL PUBLIC
CONCERT TICKETS \$15 MEMBERS | \$25 GENERAL PUBLIC
(CONCERT TICKETS INCLUDE FREE ADMISSION TO THE FESTIVAL)

FOR TICKETS CALL 520.742.6455 X0

edible
TAIN ARIZONA



Tohono Chul
GARDENS • GALLERIES • BISTRO

7366 N PASEO DEL NORTE
TUCSON, AZ, 85704