

FALL & WINTER | 2016

DESERT CORNER JOURNAL

TOHONO CHUL'S NEWSLETTER



INSIDE THIS ISSUE

P.1 Fall Plant Sale

P.2 Upcoming Exhibits 2016-17

P.3 Member Spotlight

P.4 Sundays in the Garden

P.4 Guatemalan Crafts Sale

P.5 Chiles, Chocolate & DOTD Fest.

P.6 Travel: California Bloomin'

P.6 Travel: Bosque del Apache

P.6 Travel: Armory Park

insert: Event Calendar

back cover: Holiday Hours

back cover: Copper Cactus

back cover: Holiday Nights

insert: Tours



Tohono Chul
GARDENS • GALLERIES • BISTRO

'alloe, it's me!'

HOT DANG! PLANTS!
BUY THEM! FALL PLANT SALE

Tohono Chul
GARDENS • GALLERIES • BISTRO

SAT | OCT 15 | 9AM-5PM & SUN | OCT 16 | 10AM-4PM | **GENERAL PUBLIC**
TOHONOCHUL.ORG | WED | OCT 12 | 12-6PM | **MEMBERS' PREVIEW**



HOT DANG! THIS FALL... BUY THEM PLANTS!

Members' Preview: WEDNESDAY | OCT 12 | 12–6 P.M.

General public: SATURDAY | OCT 15 | 9 A.M.–5 P.M.

General public: SUNDAY | OCT 16 | 10 A.M.–4 P.M.

Don't be fooled as fall is the perfect time to get your garden going! Our annual Fall Plant Sale hosts an extensive offering of both the typical and the unusual, native, cold-hardy, and arid-adapted plants from agaves to *Zauschneria* and everything in-between. We encourage you to bring your own wagon, but we will have plenty on hand too. Don't forget to check out our propagation greenhouse as we have a special selection of aloes like the Ghost Aloe featured in our ad. **Be aware that the plant sale is located on the east side of the grounds in the Propagation Area at 7211 N. Northern Avenue, which is the first street just west of the Ina and Oracle intersection.**

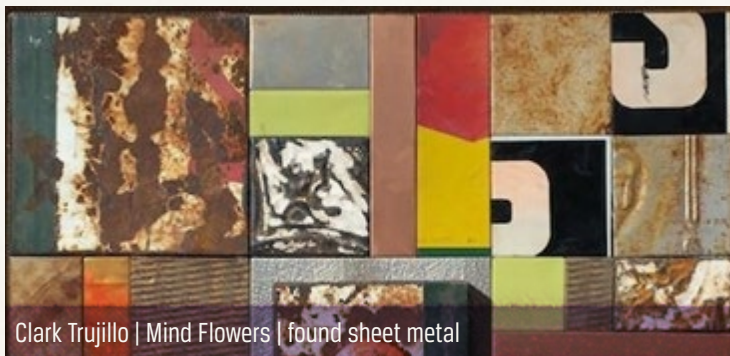
GET TO KNOW YOUR ALOE!

Why? Because aloes have colorful blossoms that attract hummingbirds, come in a huge palette of greens, variegated with reds and sometimes violets, and are simply irresistible! Although tough, aloes are also tender. In fact not all of the 500 species are ideal for Tucson, as a majority originate from Africa and the Middle East. Don't fret though! Our plant sale offers a variety of aloes that thrive in the Sonoran Desert and our plant professionals can help you find the right one.

To care for your new aloe, place it in a spot that receives light shade and can be covered in winter—most species require frost protection. Prepare for good drainage by using a sandy soil or cactus mix. This is particularly true when planting in large pots. When it comes to watering, remember: water weekly in winter, sporadically in summer, and feed in the fall. Follow these simple care instructions to keep your aloe happy and healthy for years to come!



Christopher Jagmin | *As The Light Slowly Disappears...* | gouache on cardboard



Clark Trujillo | *Mind Flowers* | found sheet metal



Stu Jenks | *Catalina State Park, Arizona* | photographic print on paper



Tom Baumgartner | *Cereus Lunix* | limited edition offset print



Rand Carlson | *Desert View* | tin collage

EXHIBITIONS 2016–2017

REVISIONS | OUTSIDE LOOKING IN

CONTINUING THROUGH NOVEMBER 2, 2016

MAIN GALLERY

Focusing on artists that trust the “spark of intuition” this exhibition celebrates works that borrow their sense of invention from visionary, outsider, and folk art as well as creations that elevate reclaimed, repurposed, and recycled materials.

CLARK TRUJILLO | FEATURED ARTIST

CONTINUING THROUGH NOVEMBER 2, 2016

WELCOME GALLERY

Tucson artist, Clark Trujillo creates some of the region's most unique work. From a vast collection of discarded sheet metal, Trujillo selects pieces that reveal traces of their history and function and transforms them into jewel-like arrangements that bridge the worlds of fine art and high craft.

10 X 10 | A FUNDRAISER

OCTOBER 7–DECEMBER 18, 2016

ENTRY GALLERY

A new invitational exhibition with the many artists who make Tohono Chul such a unique experience. 10 x 10 features a wide range of sculpture and unframed paintings, prints, photographs and mixed media works no larger than 10 inches in any dimension — all priced at \$100.

SONORAN SYMBIOSIS

NOVEMBER 10, 2016 – FEBRUARY 8, 2017 | MAIN GALLERY

Investigating the delicate balance of nature in the Sonoran Desert, this exhibition reveals the ever present, sometimes hidden, complexities and curiosities that exist between the varied flora and fauna that make the Sonoran Desert the most biologically diverse desert in North America.

Curator's Talk: Monday, November 14 & Thursday, November 17 | 10 a.m.

RAND CARLSON | FEATURED ARTIST

NOVEMBER 10, 2016 – JANUARY 8, 2017

WELCOME GALLERY

Tucson artist, Rand Carlson creates extremely distinctive collages from printed and painted tin he harvests at swap meets and auto graveyards. Each tacked tin collage reveals a sly wit and wry humor the artist has honed since the early 80's through his weekly comic strip *Random Shots*.



Harvey and Christine Nelson

Member Spotlight

REMEMBERING HARVEY & CHRISTINE NELSON

Harvey and Christine Nelson loved one another. They first met at Tucson's Gilbert and Sullivan theater at the El Conquistador Resort (now El Con Center). Christine raised son William and daughter Marjorie, while pursuing her life-long interest in music, becoming an accomplished pianist. Harvey was Chief Engineer for the Phoenix Missile Project at Hughes, now known as Raytheon. He enjoyed woodworking and, like Christine, was an avid opera fan.

Harvey and Christine also loved Tucson. They immersed themselves in the community and supported many deserving organizations. Upon Christine's death in 2015, their lifelong loves were reflected in their legacies. Their trust provided for their beloved family and for generous gifts to seven charitable causes, ranging from homelessness to the opera and symphony, and from conservation, to their church and women's health. Their gifts expressed their passion and love for Tucson and for Tohono Chul!

And...Harvey and Christine loved Tohono Chul! Their lives mirrored Tohono Chul's mission of enriching people's lives through nature, art and culture. As members and frequent visitors, they took advantage of all that Tohono Chul offers—strolls through the

gardens, concerts, and events like Bloom Night. Their university-area home even featured arid-adapted plants procured at annual plant sales.

The Nelson's generous gift to Tohono Chul is extraordinary for another reason. It is the first gift designated for the newly created Endowment. This celebrated gift from the Nelson family will help assure that Tohono Chul will thrive long into the future.

THE ENDOWMENT FOR TOHONO CHUL

The Board of Directors of Tohono Chul recently created The Endowment for Tohono Chul. This new fund is a permanent "savings account." Your gifts to the fund are held and invested. Then, each year, a payout from the corpus supports the needs of Tohono Chul. This endowment is critical to the long-term health, success and sustainability of Tohono Chul.

WILSON LEGACY SOCIETY

The Wilson Legacy Society is named in honor of Dick and Jean Wilson who created Tohono Chul with a gift of their home and property 30 years ago. The society celebrates those who are leaving estate gifts to Tohono Chul. You can make similar arrangements and be a member of the Society as well. For more information, please visit tohonochul.org/planned-giving or contact Carol Dimit in the Philanthropy office at cdimit@tohonochul.org or 520-742-6455, ext. 243



Sundays in the Garden

SUNDAYS | OCT & NOV 2016 | 1:30–3 P.M.

PERFORMANCE GARDEN | FREE WITH ADMISSION

NO-HOST BAR | NIBBLES IN THE GARDENS | SPECIALS AT THE GARDEN BISTRO

OCTOBER 9 | UA STUDENT CONCERT: GRAESYN SPIERS, IGNACIO MONDACA, LUCAS CABALLEIRA & ANGEL DURAN | CLASSICAL GUITAR

OCTOBER 16 | ANDRES PANTOJA | LATIN AMERICAN GUITAR

OCTOBER 23 | KINDRED SPIRITS | FOLK MUSIC

OCTOBER 30 | BARRIO DUO | LATIN AMERICAN MUSIC

NOV 6 | MICHAEL FRIEDMANN & PATRICK KELLY | JAZZ GUITAR DUO

NOV 13 | RICARDO MELLO | BRAZILIAN & CLASSICAL MUSIC

NOV 20 | GUS WOODROW & SPENCER CLARKE | JAZZ MUSIC

NOV 27 | JONATHAN MARTINEZ | FINGERSTYLE GUITAR

Tucson Guitar Society (TGS) has partnered with Tohono Chul to present Sunday in the Gardens. Visit their website by going to tucsonguitarsociety.org



Guatemalan Arts and Crafts Sale

FRIDAY & SATURDAY | NOV 11 & 12 | 10 A.M.–4 P.M.
LOMAKI HOUSE

Mayan women of Guatemala live in the mountain villages of their ancestors, weaving colorful textiles using traditional back-strap looms. The intricate patterns of their weavings are both ancient and modern, reflecting symbols of the pre-Columbian past and the spiritualism of the weaver, through patterns revealed in dreams.

Offered for sale at this special trunk show will be an array of clothing from flowered huipiles (square-cut blouses) to colorful rebozos (shawls), as well as fabric on the bolt, contemporary purses, vests, table runners and colorful beaded jewelry. Free admission during the sale!

Chiles, Chocolate & Day of the Dead!

FRIDAY & SATURDAY | OCT 28 & 29 |
9 A.M. – 4 P.M.

Our third annual homage to the cult of the fiery chile—and decadent chocolate—also celebrates another enduring tradition of the borderlands, Día de los Muertos (Day of the Dead), a time we remember and honor those who have gone before.

Featuring:

Chile and Day of the Dead
inspired crafts

Chile and chocolate enhanced treats
and culinary delights

Cooking demonstrations by the chefs
of the Garden Bistro

Chile and chocolate beers and wines

Musical entertainment by Rafael
Moreno, Entre Peruanos, Jovert Steel
Drum Band, Mariachi Aztlán, and
Michael Salerno

Community altar inviting participants
to leave *recuerdos* (remembrances) of
lost loved ones

Day of the Dead-themed face painting
and children's activities

Artist-inspired Day of the Dead
altars by local artists including:

Carolee Asia | José Duran | Royce
Davenport | Annie Gordon | Marry
Ellen Palmieri | Martin Quintanilla
| Gabe Ruiz Villegas | Patricia Silva |
Ted Wade Springer | Casney Tadeo |
Karen Wright

And schools including:

Canyon del Oro High School |
Ironwood Elementary | Sunshine
School



Early-Bird tickets–Sept. 1–Oct. 1:

\$3 MEMBERS

\$12 GENERAL PUBLIC

After Oct. 1:

\$5 MEMBERS

\$15 GENERAL PUBLIC

(CHILDREN 12 & UNDER FREE)



RETRO BAJA . . . as in retrospective!

by Jo Falls — Director of Education

OVER THE PAST 17 YEARS

we have ventured to Baja and its environs several times, but this trip was certainly the most ambitious. We set out to traverse the Baja peninsula from north to south, covering more than 2,700 miles in 13 days!

We started with the wine country of the Valle de Guadalupe and lunch at Deckman's en El Mogor. Michelin-starred Chef Drew Deckman in his minimalist restaurant of a few rustic wooden tables in an adobe lean-to under the trees, crafted amazing food from locally sourced ingredients. The five-course meal began with an amuse bouche of sea bass over olive oil couscous and finished with delectable fig brownie squares and Mexican chocolate ice cream with elderberry sauce. Not to mention, arguably the best course, grilled pork cheek with butternut squash and grilled garden veggies. The scallops and gooseneck barnacles were pretty good, too!

Driving to Cataviña takes you through the most unlikely "forest" in the world, the land of the boojum. Stopping along the road to experience them up close and personal never ceases to amaze.

Armory Park THE CITY BEAUTIFUL

WEDNESDAY | NOVEMBER 9
9:30 A.M. – 2:30 P.M.

Explore Tucson's short-lived attempt to build a grand city in the dusty spaces once occupied by Camp Lowell.



We made contact with one of the most magnificent creatures on earth.

Being there in April meant that they were leafed-out and many cacti were in bloom — from stately cardón to lowly mammillaria.

THE WHALE CAMP...

at Laguna San Ignacio (Ecoturismo Kuyimá) meant roughing it for a few days—we were up to it! Geared up, everyone waded out to the pangas and clambered in. You never know what you will see when you venture out in search of the gray whale. This occasion did not disappoint. Mother and baby approached for a pat and nose rub. Well worth the face full of whale snot!

Tucked in the mountains of the Sierra de la Gigantia outside Loreto is Mission San Francisco

Javier de Viggé-Biaundó. Accessible through a series of switchbacks that pass small ranches and native palm-filled canyons, the now restored volcanic rock church (built 1744-1758) serves a small community where a festival atmosphere filled the town with the release of Sunday services. Incredibly, some of the original mission gardens are still producing olives, figs, and pomegranates.

See what other upcoming travel ed-ventures we have planned by visiting tohonochul.org/travel



Desert & Sea

COMING IN FEBRUARY 2017!

Experience the immense diversity of the Sonoran Desert.

Explore ancient volcanic craters, discover the sea life teeming in the tide-pools at the edge of the Sea of Cortez, and much more!

California Bloomin' BOTANICAL GARDENS OF SOUTHERN CALIFORNIA

MARCH 29–APRIL 6, 2017

Journey to some of the historic, picturesque, and world-class botanic gardens in and around Southern California.



Tohono Chul

GARDENS • GALLERIES • BISTRO

7366 N. PASEO DEL NORTE, TUCSON, AZ 85704
520.742.6455 | WWW.TOHONCHUL.ORG

📷 like us on Instagram

📘 friend us on Facebook

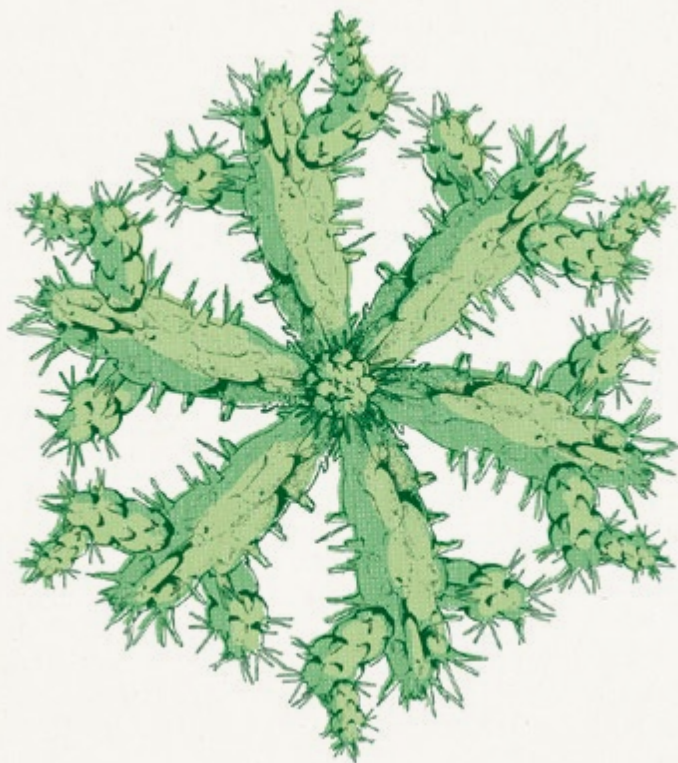
🐦 follow us on Twitter

Holiday Hours:

8 a.m. – 3 p.m. | Christmas

Eve & New Year's Eve

Closed: New Year's Day, 4th of July, Thanksgiving Day,
Christmas Day



HOLIDAY NIGHTS

A MILLION TWINKLING LIGHTS!

5:30–8:30 P.M. | DEC 2 & 3 | DEC 9 & 10 | DEC 16 & 17

Holiday Nights is fun for everyone! Stroll along paths garlanded with over a million twinkling lights while musicians and artists perform throughout the Gardens. Enjoy the many distinct performances while you sip hot chocolate and enjoy tasty treats. Bring the whole family, or bring your sweetheart!

\$12 FOR MEMBERS | \$16 FOR NONMEMBERS |
\$3 FOR CHILDREN 12 & UNDER

*The Holiday Nights event was one of
the most romantic dates I've ever had
with my boyfriend. –Sarah Barajas*



390th Memorial Museum
Arizona-Sonora Desert Museum
Arizona's Children Association
Big Brother Big Sisters of Tucson
Eagles Wings of Grace
Educational Enrichment Foundation
Humane Society of Southern Arizona
Linkages
Make Way for Books
Our Family Services
Reid Park Zoological Society
Rialto Theatre Foundation
Southern Arizona Network
for Down Syndrome
The Hermitage No-Kill Cat Shelter
& Sanctuary
Tohono Chul
Tucson Youth Development



COPPER CACTUS AWARD!

We are beyond humbled to receive a Copper Cactus Award for Charitable Non-Profit in our category. It was an honor to be a fellow nominee among such amazing non-profits bringing positive change to the Tucson community. Thank you to Tucson Metro Chamber, Tucson Electric Power, Wells Fargo, and Casino Del Sol for supporting such a spectacular event spotlighting those that make Tucson so special!

OCTOBER 2016 EVENTS

Artistic Expression Under Glass Workshop	Workshop	1 Saturday	10 a.m. – 12 p.m.
Mindfulness & Meditation: Techniques for Well Being	Class	8 Saturday	9 a.m. – 12 p.m.
New Member Tours	Special Event	8 Saturday	9 a.m.
Sundays In the Garden	Concert	9, 16, 23, 30 Sundays	1:30 – 3 p.m.
Death Valley: Painted Light	Lecture	9 Sunday	2 p.m.
Fall Plant Sale: Member's Preview	Sale	12 Wednesday	12 – 6 p.m.
Fall Plant Sale	Sale	15 Saturday	9 a.m. – 5 p.m.
Fall Plant Sale	Sale	16 Sunday	10 a.m. – 4 p.m.
Gourd Vase Workshop	Workshop	22 Saturday	9 a.m. – 4 p.m.
Landscape Design for Renovation	Class	22 Saturday	10 a.m.
Mediterranean Outdoor Style	Class	22 Saturday	2 p.m.
Chiles, Chocolate, Day of the Dead Festival	Special Event	28 – 29 Friday – Saturday	9 a.m. – 4 p.m.
10x10 A Fundraiser	Exhibit	7 October – 18 December	

NOVEMBER 2016 EVENTS

Revisions Outside Looking In	Exhibit	Through 2 November	
Sonoran Borderlands Day of the Dead	Travel	2 Wednesday	7 a.m. – 7 p.m.
Mexican Salsa Gardens in a Pot!	Class	5 Saturday	10 a.m.
Sundays In the Garden	Concert	6, 13, 20, 27 Sundays	1:30 – 3 p.m.
Armory Park: The City Beautiful - The Talk	Lecture	8 Tuesday	7 p.m.
Armory Park: The City Beautiful	Travel	9 Wednesday	9:30 a.m. – 2:30 p.m.
Guatemalan Arts & Crafts	Sale	11 – 12 Friday – Saturday	10 a.m. – 4 p.m.
New Member Tours	Special Event	12 Saturday	9 a.m.
Pocket Sketching Workshop	Workshop	16 – 18 Wednesday – Friday	10 a.m. – 4 p.m.
Organic Veggies-Desert Style!	Class	12 & 19 Saturdays	9 – 11 a.m. & 1 – 3 p.m.
Sonoran Symbiosis	Exhibit	10 November – 8 February 2017	
Celluloid Pueblo	Class	20 Sunday	2 p.m.
Epicurean Santa Fe	Travel	22 – 27 Tuesday – Sunday	
T'ai Chi Chih: "Joy Through Movement"	Class	28 Nov. – 14 Dec. Mon., Wed., Thur.	10 – 11 a.m.

DECEMBER 2016 EVENTS

SEE REVERSE FOR MORE >>

Nobody Rich or Famous: A Family Memoir	Lecture	4 Sunday	2 p.m.
Holiday Nights	Special Event	2, 9, 16 Fridays	5:30 – 8:30 p.m.
Holiday Nights	Special Event	3, 10, 17 Saturdays	5:30 – 8:30 p.m.
New Member Tours	Special Event	10 Saturday	9 a.m.

DECEMBER 2016 EVENTS

(CONTINUED)

Shared Spaces: Creating Habitats for People & Wildlife	Class	10, 17 Saturdays	10 a.m.
--	-------	--------------------	---------

JANUARY 2017 EVENTS

Members' Reception	Special Event	21 Saturday	10 a.m. - 12 p.m.
--------------------	---------------	---------------	-------------------

FEBRUARY 2017 EVENTS

Native American Art Sale	Special Event	3 - 5 Friday - Sunday	10 a.m. - 4 p.m.
--------------------------	---------------	-------------------------	------------------

