



Tohono Chul
GARDENS • GALLERIES • BISTRO

Winter 2013



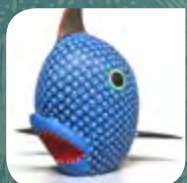
NATURE

15 Spring Plant Sale!



ART

1-2 Nature Illustrated | Featured Artist
Collection Spotlight | Katsinas
Botanical Blacksmiths | Sky Islands



CULTURE

3-4 Ceramics Show & Sale
Mexican Folk Art Show & Sale
Sonoran Spring Celebration



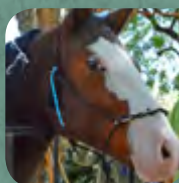
CLASSES & WORKSHOPS

5-8 Mid-century Mix | Gardening Where We Live
Vegetable Gardening | 101 Plants
Brilliant Landscape Architecture
Pocket Sketching as Journal | Fiber Constructs
Birding 404 | Wrapped Rock Gourd | A Nature Journal



TRAVEL ED-VENTURES

9-11 Sandhill Snowbirds
The Secret Junque (Yard) Garden Returns!
Mt. Lemmon SkyNights | Silver City
Kingbirds Along the San Pedro
Canyon de Chelly | Wildflower Tour???



SPECIAL EVENTS

12 & 15 It Takes a Volunteer
Cool Season Yoga – Indoors!
Hawk Happening Continues!
Roving with Rickie



Manabu Saito | *Front cover plate from the Golden Books Guide to Cacti* | watercolor (cropped)

Nature Illustrated

November 15 – February 16 | Exhibit House Main Gallery

This exhibition explores the work of eight artists from the Tucson area, who through their illustration work, seek to illuminate and educate others about the greater Sonoran Desert and the natural world as a whole. The works on display include studio paintings alongside published illustrations. These works shown together, challenge us to find a place where we might draw a line between fine artwork and illustration, while making it clear that the concentrated study that infuses the illustration work also informs the larger creative impulses of each of these artists.



Darlene Buhrow | *Finch Fight*
inkjet archival photograph with custom walnut frame (cropped)

Featured Artist – Darlene Buhrow

November 15 – February 16 | Exhibit House Welcome Gallery

Tucson artist, Darlene Buhrow is a collector of sorts. To create her assemblages that transcend into visual stories - she is almost always camera-ready. She captures doorways, windows, patterns, icons, flora and fauna, which she then catalogs for later use. As she shuffles through her archives she often finds all the elements that create the next shrine, reliquary or talisman.

She is most interested in how layered images and textures can influence the interpretation of her work—work that is often a brief moment in time, a vignette in the middle of a much longer narrative. For this particular exhibit she investigates and interprets the Arizona/Mexico border and Southwest culture, lore and faith.



Charlene Juan | *Miniature Horsehair Basket* | horsehair
Gift of Richard and Jean Wilson | ACNO 85.2.1

Collection Spotlight – Snake Basket, Tohono O’Odham

September 13 – February 16 | Exhibit House Welcome Gallery

Tohono Chul’s Permanent Collection is filled with treasures large and small, each of which is infused with personal meaning and cultural significance; linking us with our past and informing our future. This masterfully crafted miniature Tohono O’odham basket holds within its fibers a celebrated history as the first face of Tohono Chul and is symbolic of an important shift in Native American arts and crafts during the mid-twentieth century. This quarter, we celebrate this important piece of our story while paying tribute to former Tohono Chul Docent, Ione Smith, whose memorial fund has made this Collection Spotlight possible.

2 | art

Katsinas: Tradition and Innovation

December 20 – March 30 | Exhibit House Entry Gallery

Reception: Friday | February 21 | 5:30 – 7:30 p.m. with Sky Islands exhibition

This exhibit pairs works by contemporary carvers with traditional katsina dolls from Tohono Chul's permanent collection, many of which were donated by Suzanne Colton Wilson, mother of Tohono Chul founder, Richard Wilson. Exploring innovations in this traditional art form since the mid-twentieth century, this exhibition also includes a variety of other katsina-related artworks crafted by Hopi artisans throughout the Southwest. The unique designs of contemporary katsina dolls reflect culture and tradition while conveying the enthusiasm and dedication of the artists themselves in creating these beautiful works of art.



Willard Sakiestewa, Hopi | *Mongwu (Great Horned Owl) Kachina*
painted and carved, cottonwood, feathers, buckskin, yarn, string
ACNO 86.2.13

Botanical Blacksmiths

February – May | on the Tohono Chul grounds

Blacksmiths engage in one of the oldest known ways of metalworking. With a lot of heat and just as much muscle, these artists bend, shape and twist various metals into forms that combine strength and resiliency with elegance and beauty. This very special exhibition throughout Tohono Chul's gardens features forged artworks inspired by botanical and natural forms, created by blacksmiths from the region who are keeping this ancient art alive with every strike of the hammer and fire-up of the forge.



Fred Borchardt | *Nomad Marker* | forged steel
Gift of Mr. and Mrs. William Small, Jr. | ACNO 95.1.1

Sky Islands

February 21 – April 27 | Exhibit House Main Gallery

Reception: Friday | February 21 | 5:30 – 7:30 p.m.

The mountainous regions of southeastern Arizona are among the most diverse ecosystems in the world. Called the "Sky Islands" due to the fact that these elevated regions are surrounded by a virtual "sea" of desert scrub and grasslands, our mountain ranges are truly unique places. This exhibition features works by local artists who are inspired by the varied biotic communities of our precious sky islands. These artworks explore the flora and fauna found in these locations, while creatively interpreting the experience of visiting these higher elevations and the unique perspective they offer us of the surrounding desert below. **Curator's Talks: Tuesday, Feb. 25, & Thursday, Feb. 27 | 10 a.m.**



3 | culture



Kathy Dunning | Shino Platter | ceramic

Ceramics Show & Sale

Friday & Saturday | February 21 & 22 | 10 a.m. – 4 p.m. | Park Wide

At the Ceramics Show and Sale you'll find functional and decorative ceramics, from salt and pepper shakers to serving platters, in a broad array of styles to suit almost any taste or to fit almost any need. About 20 artisanal ceramicists from Southern Arizona Clay Artists (SACA) will be offering their gallery quality wares throughout Tohono Chul's grounds. Founded in the mid-1980's SACA has been the premier clay organization in this part of the state for over 25 years. This is the second consecutive year that you'll be able to enjoy the outdoor festival atmosphere of our trunk shows while browsing the best wares that SACA has to offer. [Free admission during the sale.](#)



Mexican Folk Art Show & Sale

Rugs, Pottery & Oaxacan carvings

Friday – Sunday | March 7 – 9 | 10 a.m. – 4 p.m. | Lomaki House

The Mexican Folk Art Show and Sale is a celebration of the color and vitality of Mexican folk arts. Familiar, yet fantastical, brightly painted Oaxacan creature sculptures, called alebrijes, will be on display in the hundreds. From the village of Mata Ortiz, in Chihuahua Mexico, come exquisite hand-formed and hand-painted decorative pottery. Also featured will be a bonanza of Zapotec wool rugs, sporting both traditional and contemporary designs. These rugs are created on hand-operated looms from wool obtained from local sheep, and pigmented with natural, indigenous dyes. Simply put, the Mexican Folk Art Show and Sale is a treat for the eye, hand, and heart. [Free admission during the sale.](#)



A detail view of one of the many styles of Zapotec Wool rug that will be available during the Mexican Folk Art Show and Sale.

4 | culture

Sonoran Spring Celebration 2014

Sunday | March 30 | 4–7 p.m.

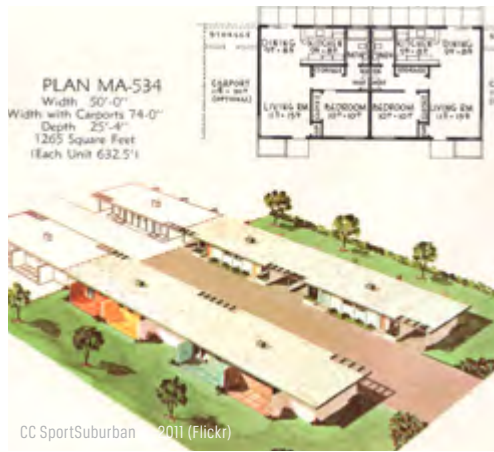
Join us for the 2014 Sonoran Spring Celebration March 30. This festival of nature, art and culture features culinary delights and libations, silent and live auctions, dance performances, live music, and art-in-the-garden with world-renowned artists.

"This annual fundraiser plays a critical role in keeping Tohono Chul's gardens blooming and it's nature, arts and culture programs enriching the lives of Tucsonans and visitors alike." says Christine Conte, Tohono Chul's Executive Director.

Attendees will be treated to live music, and performances by the "little swans" of Ballet Tucson. The Garden Bistro will host a variety of local restaurants to provide a sampling of fine fair, wine and beer are complimentary.

For ticket information please call 520.742.6455 x0





Mid-century Mix

New Date: Saturday | January 18 | 2 p.m. | Ed. Ctr. #1

Part history lesson, part landscape tutorial, designer Elizabeth Przygoda-Montgomery explains how to mix Mid-Century design with New Modern and make it work in any landscape. The modern design era is incredibly versatile with clean lines, warm wood tones and textural materials, making Mid-Century a chameleon that blends easily into any existing exterior. A brief history of Garrett Eckbo, the Eames brothers and other influential contributors to the rise of the modern design aesthetic will begin the presentation. To start your passion for Modernism, check out Tucson's Annual Modernism week, at tucsonmod.com
\$6 members | \$10 general public



Gardening Where We Live

Saturdays | January 25 & February 1 | 10 a.m. – 12 p.m.
Ed. Ctr. #1

One aspect of the mission of Tohono Chul Park is to model living with the desert; one means of fulfilling that mission is to demonstrate sustainable gardening where we live. Gardening in Tucson is not quite like gardening anywhere else and this popular two-part class is for newcomers to Arizona and newcomers to gardening. Greg Corman (Gardening Insights – www.gardeninginsights.com) shares his Tucson gardening experiences, from site assessment to design to plant and even tool selection for what can be a difficult environment for the uninitiated.
\$20 members | \$25 general public



Vegetable Gardening

Saturdays | February 8, 15, 22 & March 1 | 10 a.m. – 12 p.m.
Ed. Ctr. #1

Challenged trying to grow vegetables in Tucson? It can be done! Jason Isenberg, award-winning designer and owner of REALM, has a creative and environmentally-friendly way of approaching organic vegetable gardening in the desert southwest. In this series of four, approachable classes, Isenberg covers: Vegetable Garden Design (February 8) - strategies for ensuring maximum yield, ease of access and attractive aesthetics; Vegetable Garden Soils (February 15) – digging into the wonderful world wriggling around beneath the surface and the foundational tenant of organic gardening, “feed the soil;” Growing a Vegetable Garden (February 22) - veggie varieties, fertilizers, starting from seed, planting strategies and the all important growing calendar; and, finally, The Harvest (March 1) – starting with tools, timing and techniques for picking your produce, followed by a shared potluck of garden-based cuisine! And best of all, you can register for all four classes, or just the ones you need. \$39 members | \$49 general public for the entire series **OR** \$12 members | \$15 general public per session (**please specify which dates you are registering for.**)

5 | classes

REGISTRATION IS REQUIRED.
CALL 520.742.6455 XO



101 Plants for Desert Gardens

Saturday | March 8 | 9 a.m. | Ed. Ctr. #1

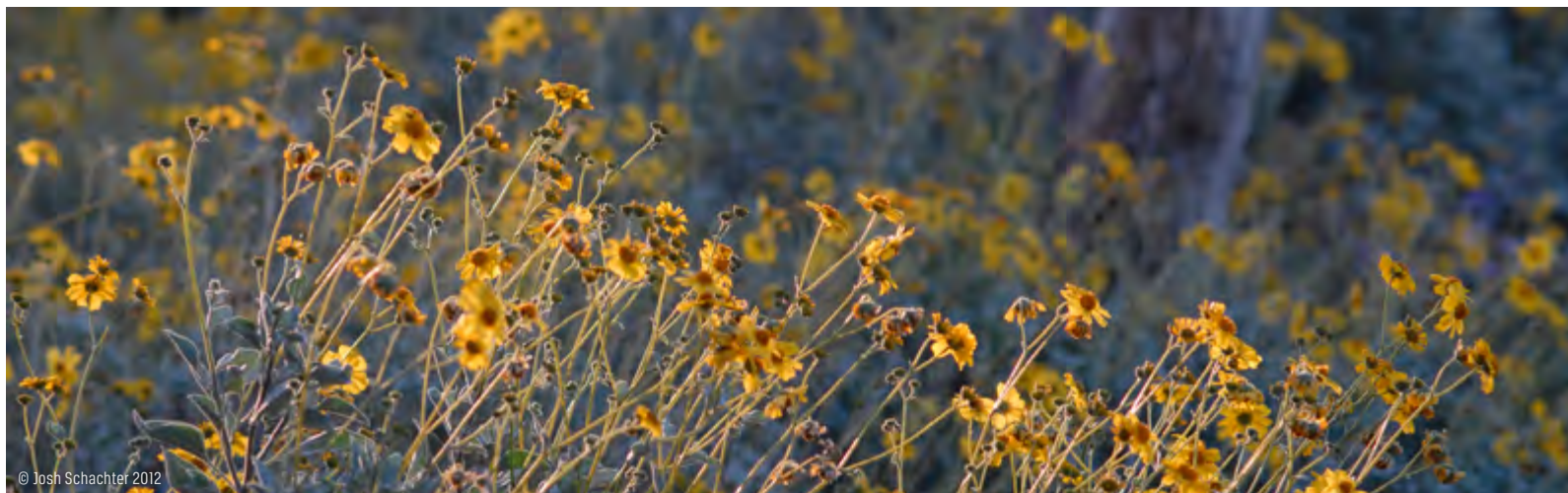
Greg Corman of Gardening Insights discusses one hundred and one of his favorite plants suitable for Arizona desert gardens. From trees to shrubs, to groundcovers and vines, the majority of these tried and true landscape gems are natives that also attract birds and butterflies. But watch out, there are a few oddballs on the list as well! Corman will also have suggestions for effective combinations that work well together in full sun, shade, and even those persistent, tough locations. **\$6 members | \$10 general public**



Brilliant Landscape Architecture From Historical to Contemporary

Saturday | March 29 | 10 a.m. | Ed. Ctr. #1

Shelly Ann Abbott, MLA, award-winning landscape designer and Master of Landscape Architecture delves into the brilliant history of landscape architecture and design, discussing how it has informed design over time. **\$6 members | \$10 general public**



CLASS& WORKSHOP PAYMENT, REGISTRATION & CANCELLATION POLICIES

- ▶ Register for Tohono Chul travel, classes & workshops by calling 520.742.6455 x0
- ▶ Registration is required for Tohono Chul travel, classes & workshops.
- ▶ Travel cancellation within two weeks of trip registration = full refund
- ▶ Travel cancellation at least two weeks before date of trip = 50% refund
- ▶ Travel cancellation less than two weeks before date of trip = refund only if your space can be filled
- ▶ Travel cancellation policies for multi-day trips vary with the trip

6 | classes

REGISTRATION IS REQUIRED.
CALL 520.742.6455 X0



Pocket Sketching as Journal

Tuesday – Friday | February 11 – 14 | 10 a.m. – 4 p.m. | Ed. Ctr. #2

This quick-draw technique of artist Kath Macaulay allows anyone to “journal” wherever they are—hiking, sitting in a café or standing in line you can preserve a memory in 25 minutes or less. Capture the “feel” of a place and include personal valuable comments, rather than simply taking an image the way a camera does. Workshop includes basic technique anyone can learn, and working ‘on location’ in the Park, plus journaling and making greeting cards. This is ideal for timid beginners who want to fearlessly paint in public, and for experienced artists who want minimal equipment and no clean-up. Cost includes all supplies; if you already have them, take advantage of the discounted price (list emailed on request from jfalls@tohonochul.org).

\$325 members (with supplies) or \$285 members (without supplies)

\$340 general public (with supplies) or \$300 (without supplies) general public



Fiber Constructs

Saturday | March 1 | 10 a.m. – 5 p.m. | Ed. Ctr. #2

Fiber artist Jane Herrick is in love with texture and the exploration of various materials in order to generate unusual sculptural forms. In this day long workshop, she guides participants in the invention of their own two or three-dimensional abstract fiber structures through the manipulation of fiber rush and waxed linen. Students will be encouraged to create unique and personally expressive forms by experimenting with different found objects to integrate into their piece. Some techniques such as needle lacing and knotless netting will be taught, but participants are encouraged to adapt and incorporate favorite techniques of their own as well. Most materials will be furnished, and additional, optional materials can be purchased at the workshop (e-mail jfalls@tohonochul.org for list of tools to bring). Please bring your own collection of small, interesting natural objects such as prickly pear skeletons or cholla branches, small flat stones, bark, twigs, etc. Make sure that all materials are cleaned ahead of time. Projects may or may not be completed during the workshop, but there will be enough instruction to continue working afterwards - the idea is to experiment and enjoy the process! Bring a brown bag lunch.

\$100 members | \$115 general public



© Randy Larson 2010



Birding 404

Tuesdays | March 4, 11, 18, & 25

For those of you who have taken Birding 101, 202 or 303, what could be more appropriate for the next step, but 404?! Working on family characteristics as well as honing identification skills, this is your opportunity to practice, practice, practice with your fearless leader and expert birder, Lynn Hassler. All sessions will take place in the field — destinations (carpooling encouraged) include Sweetwater Wetlands, Tubac (for hawk migration), Tucson City parks, and Catalina State Park. Start times will vary from 8am to 8:30am, but generally these morning trips will be 3-4 hours in length; the only exception is the Tubac trip (March 11) which will take longer due to travel time. Specific times and meeting locations will be sent upon registration, so please provide your email address when calling. **\$69 members | \$79 general public**



Wrapped Rock Gourd

Saturday | March 15 | 9 a.m. – 4 p.m. | Ed. Ctr. #2

Sue Brogdon's latest offering is inspired by her recent participation in a wire wrap jewelry course! She begins by demonstrating the multiple ways to utilize the bold colors of alcohol inks – dripping, outlining, stamping, painting, blending and in combination with other products. Students then select their favorite technique to color their own gourd. Then it's on to wire wrapping a mineral specimen to be lashed to a pine needle or suede rim treatment. All materials provided. Please bring plastic or latex gloves; a bottle of denatured alcohol; a roll of painter's tape; and a small wire cutter and most importantly, a pair of flat-nosed pliers. **\$85 members | \$100 general public**



A Nature Journal

Saturdays | April 5, 12 & 19 | 10 – 11:30 a.m. | Ed. Ctr. #2

According to author and teacher Deja Ruddick, good nature writing begins in careful observation. In this three-week workshop, she discusses authors such as William Least Heat Moon and Annie Dillard, examining how their careful observations were turned into meaningful prose about the natural world. Then it's time to venture outdoors, exploring the gardens at Tohono Chul with journals in hand, capturing the essence of what we see in writing. Each session includes time to gather, read aloud and discuss the work of the class. All materials provided. **\$50 members | \$65 general public**



CC Larry Lamsa 2013

Sandhill Snowbirds

Tuesday | January 21 | 8 a.m. – 4 p.m.

Each winter we hit the road to greet the thousands of Sandhill Cranes that gather in the Sulphur Springs Valley of southeastern Arizona. According to our guide Lynn Hassler, sedges (yes that is the name for a group of cranes) numbering as many as 20,000 individuals spend the night at Whitewater Draw, dispersing at dawn to feed on corn stubble and other waste grains in nearby agricultural fields and returning to Whitewater for a mid-day siesta. We'll have time for some general birding before lunch and the mid-day fly-in. We'll also be on the lookout for waterfowl and land birds; the Valley is a good spot for wintering raptors. Cost includes transportation to and from Tohono Chul, guide services and boxed lunch. [\\$99 members](#) | [\\$120 general public](#)



Greg Corman | Fish Stick | painted found objects and recycled steel

The Secret Junque (Yard) Garden Returns!

Thursday | February 13 | 7:30 a.m. – 5 p.m.

In their quest for exciting building materials for creative and budget-minded gardens, Scott Calhoun and Greg Corman have gotten well acquainted with the hidden treasures to be found in Tucson's junk and salvage yards. Start this day trip with a continental breakfast in the Education Center to get those creative juices flowing. Then we're off to visit several private gardens that have put "junque" to some very inspired uses. A mid-day stop at Maynard's Market in the historic Southern Pacific train depot is followed by afternoon stops at some of Tucson's best junk yards. Bring leather gloves and wear close-toed shoes suitable for walking in the dirt. Don't forget your camera, refillable water bottle and your measuring tape! [\\$125 members](#) | [\\$150 general public](#)



Mt. Lemmon SkyNights Adventure

Thursday | March 27 | 2:30 – 11 p.m.

Star-gazing is a popular pastime among Tucsonans because of our clear and open skies. Our night sky programs have been popular with members since the early 1990s and we are pleased to once again offer a truly cosmic experience at over 9,000 feet at the Mt. Lemmon SkyCenter! Celestial wonders like star clusters and distant galaxies that have fascinated humanity since the dawn of time are waiting to be explored. Learn about sunset points and star charts and view the heavens through the SkyCenter's 32-inch Schulman telescope. Cost includes transportation, guide services and a boxed supper.

[\\$115 members](#) | [\\$135 general public](#)



CC Karen & Brad Emerson 2010 (Flickr)

Silver City with Mark Bahti: The Wild West & Ancient Cultures

April 23 – 26

As a bustling 19th century mining town, Silver City, New Mexico sparkled with silver, gold and more copper than Arizona! A thousand years before that, the region bustled with the comings and goings of the vibrant Mogollon and Mimbres cultures whose legacy is preserved in stunning ceramics and the awesome Gila Cliff Dwellings. Anthropologist and author Mark Bahti is our guide to the past, telling tales of the Spanish, Mexican, Apache and Anglo history of the area, bringing the lives of ancient peoples to life. Our hosts are Piet and Mary Van de Mark of Baja's Frontier Tours (www.bajasfrontiertours.com)



CC Derek Markham 2011 (flickr)

The town's 19th century architectural ambience is enhanced with the more recent addition of restaurants, shops and hotels, making it the perfect home base for our adventures into the Wild West and beyond. A Victorian house is home to the town's museum, and nearby, the Western New Mexico University campus boasts the world's largest collection of Mimbres pottery, which the curator/director will detail for us in a private behind-the-scenes showing. We'll visit a well-preserved Army post dating to the Apache wars, tour a mining ghost town, explore the beautiful Mimbres River Valley, learn about the area's rich mining history from a third-generation miner and experience the grandeur of millions of acres of rugged wilderness as we journey to the memorable Gila Cliff Dwellings.

Travel in comfort in spacious new vans, where everyone enjoys their own window seat! Cost includes three nights' accommodations, all breakfasts, a couple of yummy picnics, admissions to tours and museums, plus travel & trip cancellation insurance. Come exploring with us as we travel back in time to a fabled, historic city and a gem of the old Southwest. **\$1395 per person, double occupancy members (\$185 single supplement); a \$500 deposit will reserve your spot.**



CC Bill Majors 2008 (flickr)

Kingbirds Along the San Pedro

Tuesday | April 29 | 6:30 a.m. – 5 p.m.

The San Pedro Riparian National Conservation Area (SPRNCA) protects nearly 40 miles of the San Pedro River, a waterway originating in the Mexican highlands. One of the last riparian ecosystems in Arizona, the lush vegetation is a haven for an impressive array of birds and who better to take us there than our resident birder, Lynn Hassler? April is a particularly good time to see migrants, breeding birds, and year-round residents. We hope to see Lucy's, yellow, and Wilson's warblers, summer tanager, green-tailed, canyon, and Abert's towhees, a variety of flycatchers and hummingbirds, gray and zone-tailed hawks and many more. An added highlight is a visit to the Benson Wastewater Pond for water birds and various migrants. Cost includes transportation, guide services and a boxed lunch. **\$99 members | \$120 general public**



Canyon de Chelly and the Hubbell Rug Auction

May 1 – 4

Journey with us to the Four Corners on this four day tour of Native American art and culture! On the road to Gallup, our first day, we have planned stops at the trading posts of R.B. Burnham and the Richardson family, exploring the life and work of native weavers and craftspeople. That evening will be spent at the historic Route 66 El Rancho Hotel. After breakfast at THE local hangout, Earls, we travel to Toadlena Trading post for a visit with owners Mark and Linda Winters and Diné (Navajo) weavers from the two Grey Hills region. In the afternoon, we have the opportunity to explore Tseyi', or as we know it today, Canyon de Chelly. In SUV's driven by our Diné guides, we'll learn the story of ancient Puebloans who settled the Canyon more than 5,000 years ago, marvel at cliff dwellings tucked into the rock faces high above us and puzzle over intricate petroglyphs chiseled into stone long before the Diné came to live here. After over-nighting in Chinle, the next morning it's a short drive to the Hubbell Trading Post for the annual Hubbell Indian Arts Auction. From rugs to baskets to pottery, who knows what treasure you may find? We end our day at La Posada Hotel in Winslow with dinner at the Turquoise Room, a culinary gem. Cost includes transportation, accommodations, guide services and most meals. **\$1000 per person, double occupancy (\$300 single supplement); a \$300 deposit will reserve your spot**

CC Ron Cogswell 2008



Wildflower Tour???

Winter rains in the Sonoran Desert play a vital role in determining the abundance of wildflowers that bloom in the spring. We'll keep our fingers crossed for a fine bloom, and we may hold a wildflower tour in the spring of 2014. Keep watching our biweekly Desert Corner Express and class workshop and travel e-mails for later announcements.

TRAVEL PAYMENT, REGISTRATION & CANCELLATION POLICIES

- ▶ Register for Tohono Chul travel, classes & workshops by calling 520.742.6455 x0
- ▶ Registration is required for Tohono Chul travel, classes & workshops.
- ▶ Travel cancellation within two weeks trip of registration = full refund
- ▶ Travel cancellation at least two weeks before date of trip = 50% refund
- ▶ Travel cancellation less than two weeks before date of trip = refund only if your space can be filled
- ▶ Travel cancellation policies for multi-day trips vary with the trip

It Takes a Volunteer

Did you know that Tohono Chul's 303 active volunteers donated over 37,000 hours in the past 12 months? And four Docents alone represent over 2500 of those hours – Kathy

Franzi, Cindy Jakobs, Don Johnson and Sarma Spitzer! On November 21 we honored our dedicated volunteers and docents at an Awards Ceremony and Appreciation Brunch hosted by

Splendido. Hours pins were awarded for cumulative service and Crystal Akazawa, Phil Davis, Nancy Greenway, Don Johnson and Steve Plevel were named "Volunteers of the Year."

7000 HOURS

Ann Nyhan
Arlene Schneider

6500 HOURS

Karen Jonaitis
Jack Quillen

5500 HOURS

Carolyn Knott
Dave Stout

5000 HOURS

Sue Feyrer

4500 HOURS

Ernie Hartline

4000 HOURS

Ann Anovitz

3500 HOURS

Jay Suchland

3000 HOURS

Jean Bassett
Marty Harow
Louise Kaufman

Ed Moll

Helen Roach

2500 HOURS

Sally Clement

2000 HOURS

Ed Apple

Don Feyrer

Joanne Hogan

Phillip Mowbray

Jean Shultz

Sally Siebert

Sarma Spitzer

1500 HOURS

Liz Bezanson
Laraine Callahan
Michele Dunlap

Jane Fisher

Kathy Franzi

Linda Friedman

Anne Gates

Cindy Jakobs

Steve Jones

Ann Kyger

KL Lance

Paul Miller

1000 HOURS

Barb Carolus

Margaret Douglas

Ethel Haber

Don Johnson

Carlton King

Miriam Solomon

Bud Watson

500 HOURS

Donna Baremore

Kathy Carpenter

Betty Elasowich

Dean Graves

Joyce Harvey

Priscilla Herrier

Sandy Kohlman

Miriam Otte

Mary Primeau

Al Romey



The awards ceremony at the Volunteer Appreciation Brunch



Cool Season Yoga — Indoors!

Thursdays | January 16 – February 20 | 4 – 5 p.m. | Ed. Ctr. #1

Feeling the post-holiday let-down or fending off the winter blahs? Join Barbara Sherman, LifeForce Yoga® practitioner and registered Yoga instructor for an hour of uplifting yoga practice. Enjoy accessible poses and breathing exercises to energize your body and ease your mind. Please bring your own mat. **\$7 members | \$7 plus cost of admission for the general public**



Hawk Happening Continues!

2nd & 4th Wednesdays | February 12 – April 23 | 11 a.m. – 1 p.m. | Children's Ramada

Traveling avian ambassador Sueño and her human, Kathie Schroeder, are here to share secrets in the lives of the Southwest's amazing Harris' hawks. **Free with admission.**



Roving with Rickie

Saturdays | December 21, February 8 & March 8 | 10 – 11 a.m.
Spanish Colonial Courtyard

Meet the Park's newest honorary Docent (Rickie the horse, a registered Spanish Barb) as he takes up his duties as a roving Docent! Come and stroll the grounds with Rickie and his favorite human, Maureen Kirk-Detberner. Learn the colorful history of these Arizona State Heritage horses and the role they played in shaping the Southwest. **Free with admission.**

TOURS

Tours are free to members and included in the price of admission for non-members. If you would like to schedule a private group tour call 520.742.6455 x 235

General Tours

Walk in the Park

Experience Tohono Chul while learning some basic Sonoran Desert ecology.

Mon. – Sat. 9 a.m. & 1 p.m.

Birds of Tohono Chul

Learn to identify residents and those “just passing through,” plus information on habits and habitat.

Mon., Wed., Fri. & Sat. at 8:30 a.m.

Art in the Park

An in-depth and behind-the-scenes look at our changing art and cultural exhibits.

Tue. & Thur. at 11 a.m. & Sun. at 2 p.m.

Specialty Tours

Stories in the Garden

Traditional and original stories about the desert and its creatures in the Children's Ramada. Tue., 10 a.m.

Butterflies of Tohono Chul

Explore the seasonal world of butterflies and discover the plants favored by caterpillars and adults. Sat. at 11 a.m.,

Mar. 1 – May 31

Wildflowers: What's Blooming?

Develop more than a nodding acquaintance with our spring wildflowers.

Tue., Thur. & Sat. at 10:00 a.m.

Mar. 4 – Apr. 29

Connecting Plants and People

Discover the edible and useful plants of the Sonoran Desert. 1st Saturday of every the month at 10:00 a.m.

The Great Xeriscape

Unearth the how-to's for using native and arid-adapted plants in water-saving landscapes. 3rd Saturday of the month at 10:00 a.m.

Eco-Stations at the Overlook

10 a.m. – 12 p.m.

Winged Things

Mondays – from birds to butterflies, a look at the winged things of the skies

Wild Woolies

Tuesdays – the warm, hairy beasts of our deserts

Rocks and Ruins

Wednesdays – explore Tucson Basin geology and archaeology

Who Eats Whom

Thursdays – an interactive approach to a desert food chain

Creepy Crawlies

Fridays – sometimes scary, but always cool! – spiders, scorpions, snakes and lizards

Prickly Plants

Saturdays – spiny and downright hostile, plants are well adapted to our desert environment

MAY – SEPTEMBER ADMISSION PRICES

- \$8 adult ▪ \$6 senior
- \$4 military & student (with ID)
- \$2 children ages 5 – 12

OCTOBER – APRIL ADMISSION PRICES

- \$10 adult ▪ \$8 senior
- \$5 military & student (with ID)
- \$3 children ages 5 – 12

With Our Compliments

Tohono Chul often opens its doors on select days to the public for a donation to a charitable organization or during national holidays.



© Dan Davis 2005



CC USDAgov 2012 (flickr)



© Dan Davis 2005



© Randy Larson 2010

WINTER EVENT CALENDAR 2013 & 2014

DECEMBER

Katsinas: Tradition and Innovation	Exhibit Opening	20 Friday	9 a.m. – 5 p.m.
Roving with Rickie	Special Event/Tour	December 21, February 8 & March 8 Saturdays	10 – 11 a.m.

JANUARY

Cool Season Yoga – Indoors!	Special Event/Class	January 16 – February 20 Thursdays	4 – 5 p.m.
Members Reception	Special Event	18 Saturday	10 a.m. – 12 p.m.
Mid-century Mix	Class	18 Saturday	2 p.m.
Sandhill Snowbirds	Travel	21 Tuesday	8 a.m. – 4 p.m.
Gardening Where We Live	Class	25 January & 1 February Saturdays	10 a.m. – 12 p.m.

FEBRUARY

Botanical Blacksmiths	Exhibit Opening	1 Saturday	8 a.m. – 5 p.m.
Vegetable Gardening	Class	February 8, 15, 22 & March 1 Saturdays	10 a.m. – 12 p.m.
Pocket Sketching as Journal	Workshop	11 Tuesday – 14 Friday	10 a.m. – 4 p.m.
Hawk Happening Continues!	Special Event/Tour	February 12 – April 23 2nd & 4th Wednesdays	11 a.m. – 1 p.m.
The Secret Junque (Yard) Garden Returns!	Tavel	13 Thursday	7:30 a.m. – 5 p.m.
Katsinas: Tradition and Innovation & Sky Islands	Exhibit Reception	21 Friday	5:30 – 7:30 p.m.
Sky Islands	Exhibit Opening	21 Friday	9 a.m. – 5 p.m.
Ceramics Show & Sale	Sale	21 Friday & 22 Saturday	10 a.m. – 4 p.m.
Sky Islands Curator's Talk	Special Event	25 Tuesday	10 a.m.
Sky Islands Curator's Talk	Special Event	27 Thursday	10 a.m.

MARCH

Fiber Constructs	Workshop	1 Saturday	10 a.m. – 5 p.m.
Birding 404	Class	4, 11, 18 & 25 Tuesdays	
Mexican Folk Art Show & Sale	Sale	7 Friday – 9 Sunday	10 a.m. – 4 p.m.
101 Plants for Desert Gardens	Class	8 Saturday	9 a.m.
Wrapped Rock Gourd	Workshop	15 Saturday	9 a.m. – 4 p.m.
Spring Plant Sale Members Preview	Sale	19 Wednesday	12 – 6 p.m.
Spring Plant Sale	Sale	22 Saturday	9 a.m. – 5 p.m.
Spring Plant Sale	Sale	23 Sunday	9 a.m. – 4 p.m.
Mt. Lemmon SkyNights Adventure	Travel	27 Thursday	2:30 – 11 p.m.
Brilliant Landscape Architecture From Historical to Contemporary	Class	29 Saturday	10 a.m.
Sonoran Spring Celebration 2014	Special Event	30 Sunday	4 – 7 p.m.

APRIL

Exhibit Opening: Southern Arizona Watercolor Guild	Exhibit Opening	4 Friday	9 a.m. – 5 p.m.
A Nature Journal	Workshop	5, 12 & 19 Saturdays	10 – 11:30 a.m.
Silver City with Mark Bahti: The Wild West and Ancient Cultures	Travel	23 Wednesday – 26 Saturday	
Kingbirds Along the San Pedro	Travel	29 Tuesday	6:30 a.m. – 5 p.m.

COOL EVENTS Mark Your Calendar



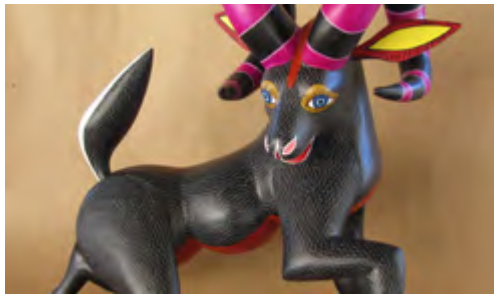
SPECIAL EVENT Members Reception

Saturday | January 18 | 10 a.m. – 12 p.m. | Performance Garden
Tohono Chul Members can RSVP by calling 520.742.6455 x0



SHOW & SALE Southern Arizona Clay Artists

Friday & Saturday | February 21 & 22 | 9 a.m. – 4 p.m. | Park Wide
(Image left: Karen Kos | Lewis Baton | ceramic)



SHOW & SALE Mexican Folk Art Show & Sale

Friday – Sunday | March 7 – 9 | 10 a.m. – 4 p.m. | Lomaki House



PLANT SALE Spring Plant Sale

Members' Preview | Wednesday | March 19 | 12 p.m. – 6 p.m.
General Public | Saturday | March 22 | 9 a.m. – 5 p.m.
General Public | Sunday | March 23 | 10 a.m. – 4 p.m.



SPECIAL EVENT Sonoran Spring Celebration

Sunday | March 30 | 4 – 7 p.m. | Park Wide

Friend us on Facebook.



Follow us on Twitter.



Tohono Chul

GARDENS • GALLERIES • BISTRO

7366 N. PASEO DEL NORTE, TUCSON, AZ 85704
520.742.6455 | WWW.TOHOCHUL.ORG

Save the Date

2014

Sonoran Spring Celebration

*Sunday, March 30th
4:00 to 7:00 p.m.*

FOR TICKET INFORMATION
CALL 520.742.6455 EXT. 0