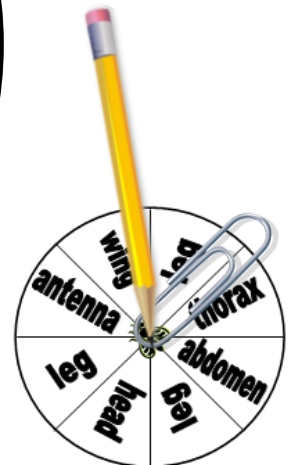
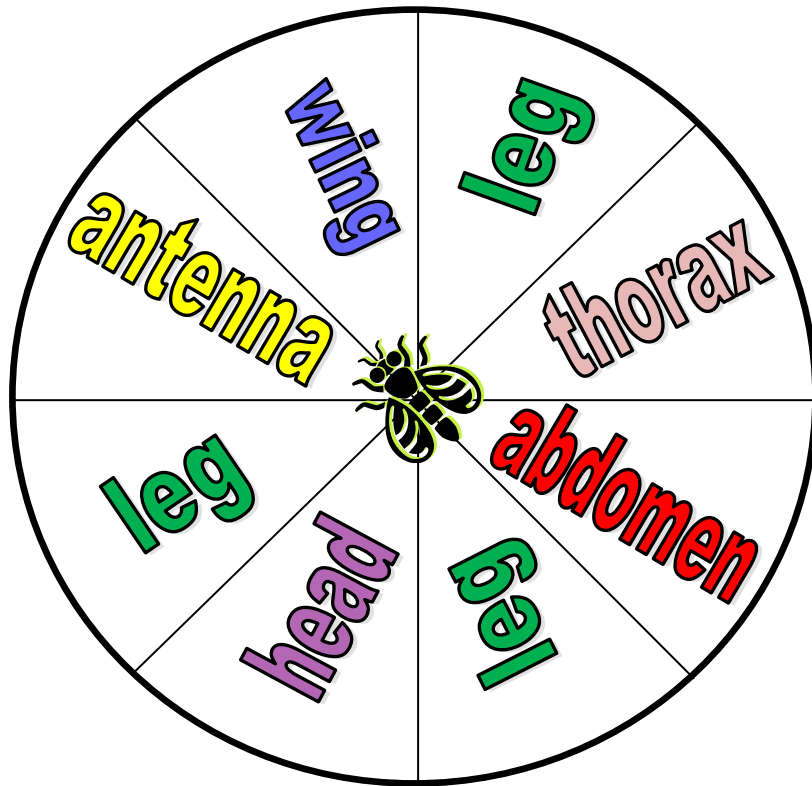
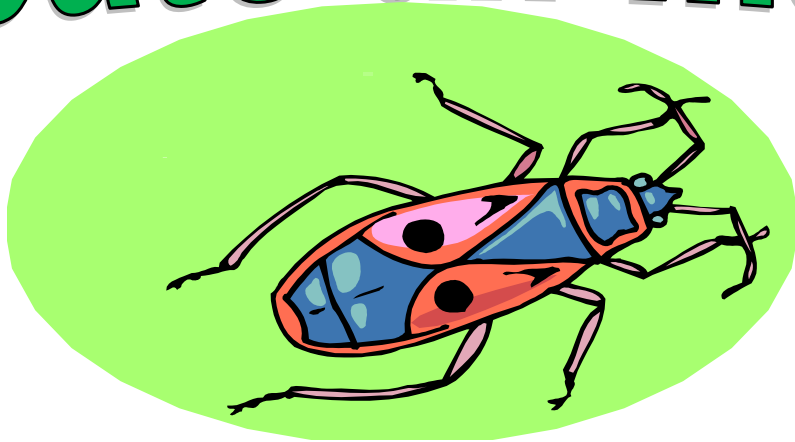




# Create an Insect



**Create an Insect**

**Create an Insect**

**Create an Insect**

**Create an Insect**

**Create an Insect**

**Create an Insect**





**17**

There are more bugs in the world than any other type of animal.

**18**

Bugs can't hurt you.

**19**

Some bugs can help plants grow.

**20**

Most insects have wings.

**21**

An insects skeleton is outside its body.

**22**

An insect's six legs grow out of its head.

**23**

Insects can't kill things bigger than them.

**24**

All insects are poisonous.

**25**

Some insects spread diseases.

**26**

Some insects help people.

**27**

The life cycle of most insects starts with an egg.

**28**

Complete metamorphosis includes egg, larva, pupa, and adult insect.

**29**

No insect gives birth to young.

**30**

Incomplete metamorphosis includes egg, nymph, and adult.

**31**

Insects can't live in water.

**32**

Some bugs live together in large groups and are called social.

**1**

**2**

**3**

**4**

**5**

**6**

**7**

**8**



**9**

**10**

**11**

**12**

**13**

**14**

**15**

**16**


- |           |       |           |       |
|-----------|-------|-----------|-------|
| <b>1</b>  | False | <b>17</b> | True  |
| <b>2</b>  | True  | <b>18</b> | False |
| <b>3</b>  | True  | <b>19</b> | True  |
| <b>4</b>  | True  | <b>20</b> | True  |
| <b>5</b>  | False | <b>21</b> | True  |
| <b>6</b>  | False | <b>22</b> | False |
| <b>7</b>  | True  | <b>23</b> | False |
| <b>8</b>  | True  | <b>24</b> | False |
| <b>9</b>  | False | <b>25</b> | True  |
| <b>10</b> | True  | <b>26</b> | True  |
| <b>11</b> | True  | <b>27</b> | True  |
| <b>12</b> | True  | <b>28</b> | True  |
| <b>13</b> | False | <b>29</b> | False |
| <b>14</b> | False | <b>30</b> | True  |
| <b>15</b> | True  | <b>31</b> | False |
| <b>16</b> | False | <b>32</b> | True  |

**1**  
**2**  
**3**  
**4**  
**5**  
**6**  
**7**  
**8**  
**9**  
**10**  
**11**  
**12**  
**13**  
**14**  
**15**  
**16**