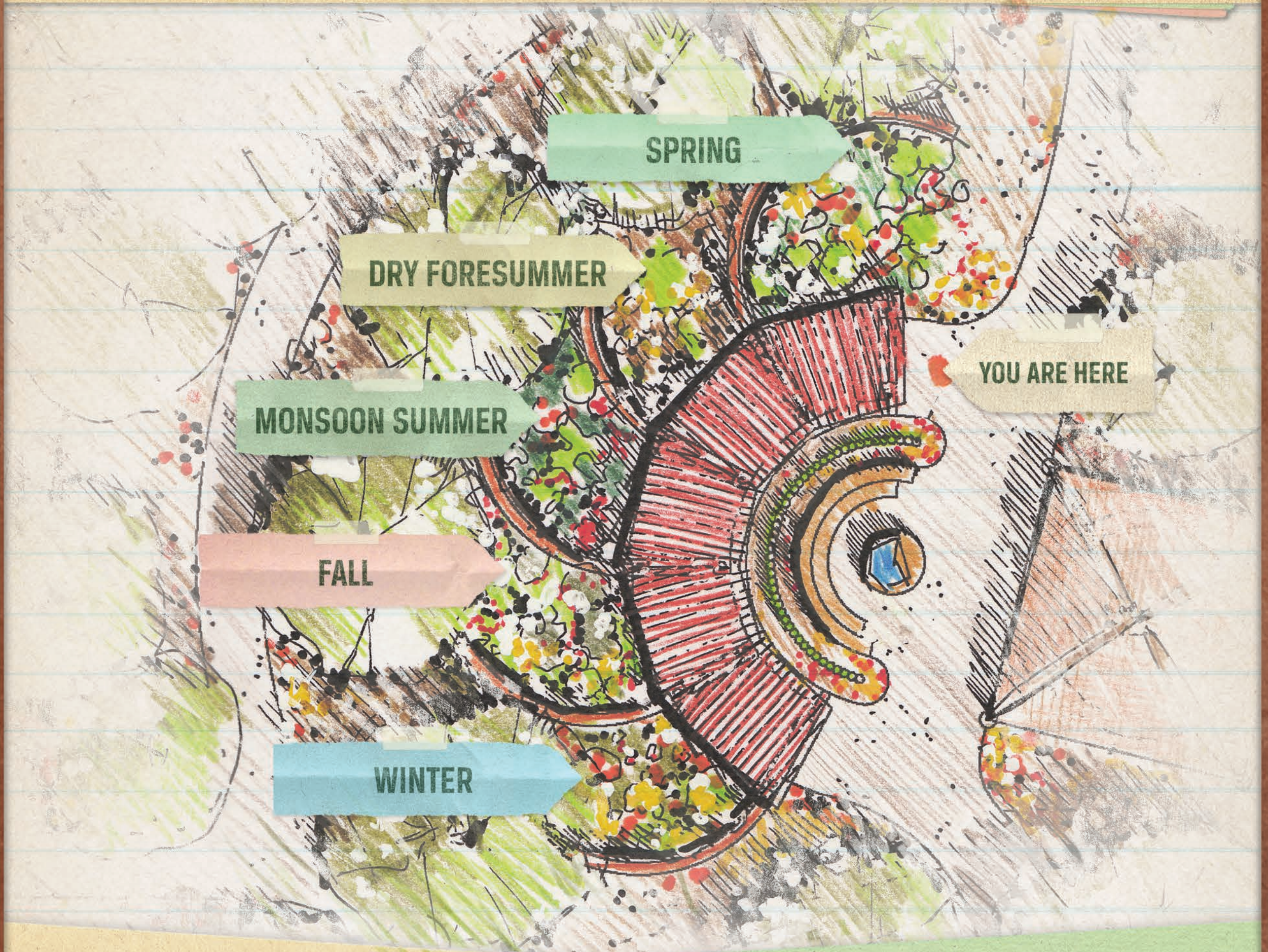


# WHERE ARE WE?



**WELCOME TO THE SONORAN SEASONS GARDEN, SHOWCASING THE CHANGING FLORA OF OUR UNIQUE FIVE SEASONS — SPRING, DRY FORESUMMER, MONSOON SUMMER, FALL, AND WINTER.**

Tucson sits on the eastern edge of the Arizona Upland subdivision of the Sonoran Desert, the highest and coldest of the Desert's six designated regions. It extends north to the edge of the Mogollon Rim and south to the foothills of the Sierra Madre Occidental in Sonora. The Upland is noted for its basin and range topography — alternating flat valleys and steep mountain ranges — and its unique five seasons. A wide diversity of plant life is dominated by columnar cacti (saguaros) and legume trees (palo verdes). Someday the Upland may no longer be a part of the Sonoran Desert. Many biologists argue that temperature, precipitation and the resulting vegetation make this region more thornscrub than desert.