

FALL/WINTER 2021

# DESERT CORNER JOURNAL

TOHONO CHUL'S NEWSLETTER



## INSIDE THIS ISSUE

P.1 Fall Plant Sale

P.1 Sundays in the Garden

P.1 Guatemalan Crafts Sale

P.2 Upcoming Exhibitions

P.3 Gift Spotlight:  
The Roy Kurtz Basket Collection

P.4 Endowment for Tohono Chul

P.4 Wilson Legacy Society

P.5 Meet Kasey Fry

P.5 Meet Karen Hayes, Again

P.6 Tortoise Tending Team

P.6 Holiday Nights

BACK Docent Class

INSERT Events Calendar



**Tohono Chul**  
GARDENS • GALLERIES • BISTRO





## FALL PLANT SALE

**Members' Preview:**

**Wednesday | October 27 | 9am - 3pm**

**General Public:**

**Saturday | October 30 | 9am - 3pm**

**Sunday | October 31 | 9am - 3pm**

Be aware that the plant sale is now hosted in our main parking lot located off Paseo del Norte.

Now's your chance to add some local flora to your household with our Fall Plant Sale. Whether you're potting them or planting in the ground, the selection of over 1,200 species of native vegetation is diverse and includes plants that cannot be found anywhere else. All the plants are propagated for the southern Arizona climate which means they are much hardier and arid-adapted, making them ideal for indoor and outdoor use. Choose from a selection of blooming vegetation to attract local fauna such as butterflies and hummingbirds. There are even special sections to help you find the right plant for your garden. Make your backyard a beautiful Sonoran Desert rainbow.

## SUNDAYS IN THE garden

### FALL CONCERT SERIES

**1:30 - 3:00 pm | Performance Garden**

Concerts free with admission

**Masks will be required at this event as social distancing is not possible.**

OCTOBER 10	<b>Grupo Riken</b>   Folkloric Music from Latin America and the Caribbean
OCTOBER 17	<b>Pima Jazz</b>   Jazz Ensemble
OCTOBER 24	<b>Borderlands Ensemble</b>   Music from the Border: American and Mexican Music
NOVEMBER 7	<b>LeeLee Hunter</b>   Classical Guitar
NOVEMBER 14	<b>Tucson Guitar Quartet</b>   Classical Guitar Quartet
NOVEMBER 21	<b>Duo Chinoiserie</b>   Guitar and Guzheng Duo/World Music
NOVEMBER 28	<b>Emily Anderson</b>   Singer/Songwriter



## GUATEMALAN CRAFTS SALE

**Friday & Saturday | November 12 & 13 | 10am - 4pm**

**Education Center Classroom #1 | 7211 N. Northern Avenue | Free Admission During the Sale**

Infuse your home with a kaleidoscope of color from the Guatemalan Crafts Sale. For close to a decade, we've hosted this trunk sale featuring an array of brilliant beaded jewelry, colorful shawls, handwoven textiles, contemporary purses, vests, table runners, and the traditional square-cut embroidered blouses known as Huipiles. This unique event supports Tohono Chul and Guatemala's vibrant cottage industries.



# EXHIBITIONS 2021-2022



Manuel Fontes | Inside House on the Hill | archival pigment print



Melody Prentice | Arizona Birder | mixed media



Patrick Hynes | Notes on the Desert | found objects on panel with artist frame



Holly Swangstu | Joined by a River | dyed cotton on canvas



Jan Bell | Arroyo, Two Days Later | ceramic

## DÍA DE LOS MUERTOS

Main Gallery | Through November 8, 2021

Celebrates the creative ways artists honor and enliven this deeply meaningful holiday through artistic expressions of personal and universal significance. Curated by the Exhibits Department and Maricopa artist/anthropologist, Manuel Fontes, Día de los Muertos features sixty-one works from forty-three Arizona artists.

## DIANE GANSKI AND MELODY PRENTICE | DREAMS OF THE DEAD

Welcome Gallery | Through November 8, 2021

This exhibit spotlights the lively, playful, and funky work of Tucson artists Diane Ganski and Melody Prentice in a special exhibition of jewelry, sculpture, and paintings. A big part of the Chiles, Chocolate, and Day of the Dead Festival the past several years, we are excited to welcome their Day of the Dead inspired creations to the Galleries.

## VISIONARY REVISIONS

Entry Gallery | Through November 7, 2021

Focusing on artists that trust the “spark of intuition,” Visionary Revisions champions unusual approaches, borrowing from visionary, outsider, and folk art traditions and elevating reclaimed, repurposed, and recycled materials to the level of the precious. Featuring the work of: Royce Davenport, Patrick Hynes, Ed Larson, Mary Bohan, and Ralph Prata.

## HOLLY SWANGSTU | FORGOTTEN SOIL

Entry Gallery Project Space  
November 19, 2021 – January 2, 2022

The Entry Gallery Project Space series offers Arizona artists an intimate space for cohesive projects. Tucson artist, Holly Swangstu, employs thin strips of colorful hand-dyed cotton fabric in moody vertical and horizontal compositions that evoke the desert's light, sky, and landscape.

## THE ELEMENTS: EARTH

Main Gallery | November 19, 2021 – February 2, 2022

EARTH is the first exhibition in the series, THE ELEMENTS. Four exhibitions will investigate how artists utilize the elements of fire, air, water, and earth as medium, process, and subject. And how, as subject, these elements reflect some of the social, economic, political, and environmental issues Arizona currently faces.

Curator's Talk: Tuesday, November 23 and Thursday, December 2 at 10 am





## THE ROY J. KURTZ COLLECTION

### AN INTRODUCTION

Roy J. Kurtz remembers the early beginnings of Tohono Chul when he could reach it from Ina Road. He remembers the Haunted Bookstore and speaks about the incredible place Tohono Chul has grown to be. This story – Roy’s story – blends his passion for collecting with Tohono Chul’s mission of “connecting people with the nature, art, and culture of the Sonoran Desert region...” and has culminated with a wondrous gift that will significantly enhance Tohono Chul’s Permanent Collection.

### THE EARLY YEARS

The Kurtz family emigrated from Germany in the 1870s and settled in the coal mining country of Westmoreland County, Pennsylvania. Roy was born in Greensburg, Pennsylvania in 1933. After graduating from Greensburg High School in 1952, Roy worked in the steel mills. Earning enough money to attend the University of Pittsburgh, he graduated in 1957 with a B.B.A. in Economics. The day of his graduation, Roy received a draft notice and obediently joined the Army.

Stationed in Stuttgart, Germany, Roy developed an admiration and appreciation for other cultures and began to see serious collecting as a way to preserve them. Coming home, Roy took a position with the Westmoreland County Child Welfare Department that intensified his interest in social work. Backed by a scholarship and the GI Bill, Roy attended West Virginia University and earned a Master of Social Work degree that launched his 42-year career in

social work. For over a decade, he devoted himself to child welfare. In 1972 and ready for a change, Roy moved to Tucson to work with the U.S. Department of Veterans Affairs.

Roy retired in 2003. To celebrate, he acquired a beautiful piece of Tohono O’odham basketry, a large tray with a squash blossom motif of red yucca root. It serves as an acknowledgment of hard work and the importance of tradition. (pictured below)



The Roy J. Kurtz Collection is vast and will provide endless possibilities for Tohono Chul’s Education and Exhibits programs for years to come. Apart from Dick and Jean Wilson’s original gift, no gift has been as significant in representing the arts and traditions of our region as Roy’s donation. Not only did Roy gift his remarkable collection, but he has generously provided funding from his assets and through his estate to care for the collection in perpetuity.





"Tohono Chul is a place to be proud of," Roy said, "I sincerely believe The Collection will reach its true potential at Tohono Chul." Roy's gift has filled our hearts with amazement and delight, and we are overjoyed and humbled to carry on his life's passion and legacy.

Watch for the continuation of Roy's story and upcoming exhibitions of The Roy J. Kurtz Collection in early 2022.

## THE ENDOWMENT FOR TOHONO CHUL

Donors with a vision for Tohono Chul's future often enjoy endowment giving. Endowment earnings support Tohono Chul operations while the balance of the portfolio is reinvested. Including new gifts and investment earnings, Tohono Chul's endowment has grown by nearly 50% since June 2020. For information on endowment giving, please contact Christine Conte, Ph.D. at 520.742.6455 extension 212.

## WILSON LEGACY SOCIETY

You are invited to join the Wilson Legacy Society, Tohono Chul's legacy giving circle, by leaving a gift to Tohono Chul through your will or estate. While not intended as legal advice, the following language will help guide you. "I hereby leave (percentage of estate, amount of gift or the rest and residue) to Tohono Chul Park, an Arizona non-profit (#86- 0438592), 7366 North Paseo del Norte, Tucson, AZ 85704 to become part of The Endowment for Tohono Chul."



## WITH GRATEFUL HEARTS...

2020 was a year like no other! We believe the worst is over and, thanks to you, Tohono Chul has emerged ready to embrace the future. Make no mistake. There were many challenges. But we banded together and focused on remaining true to our mission and core programs, and keeping the gardens flourishing and our historic structures intact.

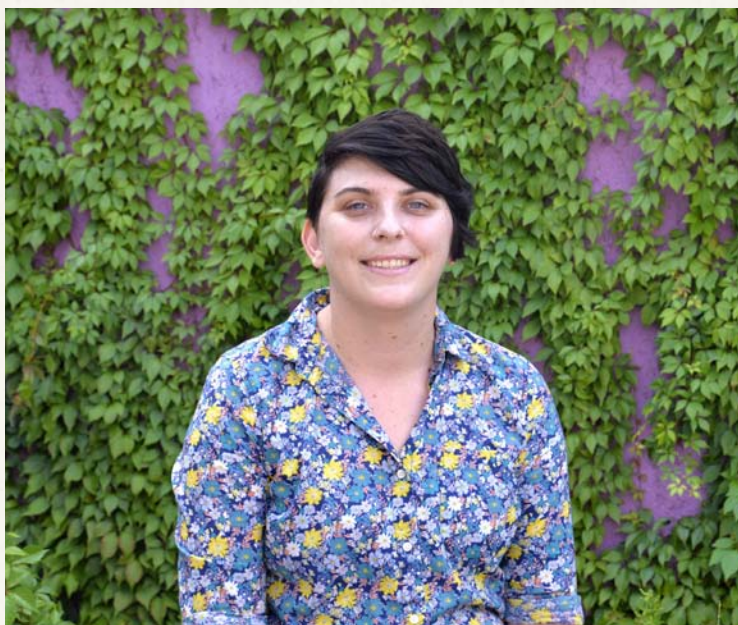
We learned that this wonderful oasis means a great deal to many, that even a global pandemic is no match for the love of nature and the environment. We witnessed the community coming together to support a natural treasure.

We are humbled and ever so grateful for the outpouring of support from our board members, donors, members and volunteers over these last 18 months. Your gifts, small and large, ensured we kept the doors open and the gardens blooming. Yes, it's been quite a year and we are proud to share the following accomplishments. Despite the pandemic, Tohono Chul:

- Enhanced its digital programming that reached nearly 26,000 subscribers
- Welcomed more than 16,500 visitors since last August's partial reopening
- Offered virtual and in-person programming to hundreds of members
- Greeted 2,600 people at our Fall and Spring plant sales
- Celebrated Bloom Night with over 300 members; and
- Expanded our reach, activating 284 docents and volunteers to provide nearly 17,000 hours of service.

It's because of you that Tohono Chul is here today providing welcome support and respite, offering gardening therapy, presenting opportunities to discover, learn, explore creativity and find inspiration, and we simply cannot thank you enough.





## KASEY FRY, VOLUNTEER SERVICES COORDINATOR

Kasey Fry joined Tohono Chul in June as our new Volunteer Services Coordinator and has already made a big impact. In the past several months Kasey has been able to meet a large number of our volunteers and docents, she has scheduled two days of coverage for Monsoon Madness, and is taking great strides to bring new volunteers into the fold for all departments as well as arranging several student internships for the Events Department and the Exhibits Department.

Kasey is a natural fit for Tohono Chul; she holds a B.S. in Fisheries and Wildlife Science from Oregon State University and a B.S. in Veterinary Science from the University of Arizona with internships at the Tucson Audubon Society and the Arizona-Sonora Desert Museum. Before coming to Tohono Chul, Kasey was a Veterinary Assistant at Animal Birth Control of Tucson. Possessing considerable experience as a volunteer, Kasey has worked with Sister Jose's Women's Center, Sustainable Tucson, Tucson Wildlife Center, Wildlife Rehabilitations of Tucson and most recently Big Brothers Big Sisters of Tucson and the Tucson Audubon Society.

If you would like to know more about volunteer opportunities at Tohono Chul please feel free to contact Kasey by email: [kfry@tohonochul.org](mailto:kfry@tohonochul.org) or by phone at 520.742.6455 extension 241. Kasey's office is in The Desert Discovery Education Center.



## KAREN HAYES, PUBLIC PROGRAMS MANAGER

Karen Hayes is Tohono Chul's first Public Programs Manager. The newly created position will have Karen, who started in August, working with the Education and Exhibits Staff to maintain, develop, promote, and manage programs, workshops, travel, and classes.

Karen is very familiar with Tohono Chul, she served as the Assistant Curator and Collections Manager in the Exhibits Department from 2014 to 2018 and was instrumental in the development of the Tuesday Art Talks Series, Artist Studio Tours, Collections Grants, and General Operating Support Grants. Her connections to the creative community and to our visitors, members, volunteers, and docents runs deep. Karen holds a B.A. in Classics with an Art History Minor from The University of Arizona and an M.A. in Museum Studies from the University of Leicester.

In 2018, Karen moved to Denver and gained valuable experience, cataloging the assets of the U.S. Mint, followed by a stint as a Collections Assistant at the Denver Art Museum. Karen moved back to Tucson in 2019 and has been working at the Arizona State Museum as a Curatorial Assistant. She is very happy to be returning to Tohono Chul in this new role, and we are lucky to have her back.

Karen's office is in the Desert Discovery Education Center. If you would like to connect with Karen and find out what will be coming up please feel free to contact her by email: [khayes@tohonochul.org](mailto:khayes@tohonochul.org) or by phone at 520.742.6455 extension 228.





## TORTOISE TENDING TEAM

Our desert tortoises emerged from hibernation to a new world. When they entered their annual slumber last October we had mask mandates outdoors, the COVID-19 vaccines were still being developed, and there was much uncertainty as to when things would “return to normal”.

Blissfully unaware of our troubles, our six tortoises arose from their slumber ready to eat. They were greeted by a team of passionate and kind volunteers ready to provide the best possible care. Our Tortoise Tending Team is responsible for the feeding of our Desert Tortoises. They meet in pairs every day to ensure our tortoises are properly fed and watered. They follow the recommended diet for desert tortoises living in captivity. They favor native plants such as Globe Mallows, Evening Primroses, Desert Willow flowers, Prickly Pear fruit, Bermuda grass and supplement with leafy greens like collard greens, mustard greens, turnip greens and spinach.

Scooter, our male tortoise in the winter section of the Sonoran Seasons Garden, is getting a new home. Volunteers and grounds staff are building him a new burrow. Desert tortoises use their burrows to hibernate in the winter, escape the summer sun, and sleep safely at night. The ideal burrow is well insulated with dirt and sand. It is deep and wide enough so the tortoise can easily turn around, but not so roomy that the inside temperature changes quickly and to extremes. The temperature should not exceed 85 degrees on a hot and sunny afternoon.



## HOLIDAY NIGHTS A MILLION TWINKLING LIGHTS!

**December 10, 11, 17, 18 | 5:30 – 8:30pm**

**Tickets on sale October 1**

**\$13 members | \$17 general public**

**\$6 children ages 5-12 | children under 5 free**

**MASKS WILL BE REQUIRED SINCE SOCIAL DISTANCING IS NOT POSSIBLE AT THIS EVENT.**

Holiday Nights is a Tucson twinkle light tradition that's fun for everyone! Stroll along paths draped with over a million twinkling lights while musicians and artists perform throughout the gardens. Who can resist a sing-along, viewing the stars through a telescope, or local art? This is a great time to shop local as the Museum Shops are filled with unique gifts, the gallery has three exhibits on display, and don't forget the ultimate gift of an annual membership to Tohono Chul.

**Friday, December 10**

Joe Bourne | Gabriel Ayala | Domingo DeGrazia | Cirque Roots | Santa

**Saturday, December 11**

Rene Taylor | Mr. Nature's Music Garden | Tucson Jazz Institute | Cirque Roots | Santa

**Friday, December 17**

AZ Star Tours | McCann Sisters | Grupo Riken | Cirque Roots | Santa

**Saturday, December 18**

Dos Sueños | Maderas Strings | Jovert Steel Drum Band | Cirque Roots | Santa





**Tohono Chul**  
GARDENS • GALLERIES • BISTRO

7366 N. PASEO DEL NORTE, TUCSON, AZ 85704  
520.742.6455 | WWW.TOHONCHUL.ORG

**HOURS:**

Gardens | 8am - 5pm

Garden Bistro | 8am - 4:30pm

Exhibits, Shops & Greenhouse | 9am - 5pm

Closed New Year's Day, 4th of July, Thanksgiving & Christmas

NON PROFIT ORG.

US POSTAGE

**PAID**

TUCSON, AZ

PERMIT NO. 1688

## DOCENT CLASS

October 2021 sees the return of Tohono Chul's Docent Class. Our docents wear many hats, foremost being the guided interpretation they provide our guests. Docents lead tours through the gardens, sharing information about desert plants and creatures, and art exhibitions in addition to presenting eco-stations at the Overlook.

To get ready, Tohono Chul's Docents in Training spend 18 weeks learning about the nature, art, and culture of the Sonoran Desert region. Seasoned docents fine-tune their interpretation skills by attending continuing education sessions throughout the year. Last year, COVID-19 canceled the Docent Class. Never standing still, current docents and volunteers concentrated on enriching their quest for life-long learning. With public tours returning in October, we will be ready to welcome our visitors with renewed vigor.

Docents, of all levels, focus on topics such as Ensuring a Positive Guest Experience; Inclusion and Accessibility; Principles of Interpretation; Birds, Butterflies, Succulents, Shrubs, Trees, Flowering Plants, and Vines; Connecting Plants and People (Ethnobotany); Desert Landscaping; and Tohono Chul Gardens.



February 2020 Graduating Docent Class



Docent Jill offering the Creepy Crawlies Eco-station (2016)



Docent Bev leading a tour (2016)



# FALL 2021 SCHEDULE

Visit [tohonochul.org](http://tohonochul.org) to register for classes or buy tickets to special events.

## SEPTEMBER 2021 EVENTS

Reptile Ramble   Overlook	Event	September 3, 10, 17, 24	10am
Día de los Muertos   Main Gallery	Exhibit	Through November 8	
Dreams of the Dead   Welcome Gallery	Exhibit	Through November 8	

## OCTOBER 2021 EVENTS

Reptile Ramble   Overlook	Event	October 1, 8, 15, 22, 29	10am
Sundays in the Garden   Performance Garden	Event	Sunday, October 10	1:30-3pm
Birds of Prey   Children's Ramada	Event	Wednesday, October 13	11am-1pm
Sundays in the Garden   Performance Garden	Event	Sunday, October 17	1:30-3pm
Sundays in the Garden   Performance Garden	Event	Sunday, October 24	1:30-3pm
Yoga in the Garden   Performance Garden	Event	Tuesday, October 26	9:30-10:30am
Birds of Prey   Children's Ramada	Event	Wednesday, October 27	11am-1pm
Fall Plant Sale   Members' Preview	Sale	Wednesday, October 27	9am-3pm
Fall Plant Sale	Sale	Saturday, October 30	9am-3pm
Fall Plant Sale	Sale	Sunday, October 31	9am-3pm

## NOVEMBER 2021 EVENTS

Yoga in the Garden   Performance Garden	Event	November 2, 9, 16, 23, 30	9:30-10:30am
Reptile Ramble   Overlook	Event	November 5, 12	10am
Sundays In The Garden   Performance Garden	Event	Sunday, November 7	1:30-3pm
Birds of Prey   Children's Ramada	Event	Wednesday, November 10	11am-1pm
Guatemalan Crafts Sale   Education Center	Sale	Friday, November 12	10am-4pm
Guatemalan Crafts Sale   Education Center	Sale	Saturday, November 13	10am-4pm
Sundays In The Garden   Performance Garden	Event	Sunday, November 14	1:30-3pm
Holly Swangstu   Entry Gallery Project Space	Exhibit	Through January 2	
THE ELEMENTS: EARTH   Main Gallery	Exhibit	Through February 2	
Ralph Prata   Welcome Gallery	Exhibit	Through February 2	
Sundays In The Garden   Performance Garden	Event	Sunday, November 21	1:30-3pm
Sundays In The Garden   Performance Garden	Event	Sunday, November 28	1:30-3pm



## DECEMBER 2021 EVENTS

Yoga in the Garden   Performance Garden	Event	December 7, 14, 21	9:30-10:30am
Birds of Prey   Children's Ramada	Event	Wednesday, December 8	11am-1pm
Holiday Nights	Event	December 10,11	5:30-8:30pm
Holiday Nights	Event	December 17,18	5:30-8:30pm
Birds of Prey   Children's Ramada	Event	Wednesday, December 22	11am-1pm

## WEEKLY HAPPENINGS OCTOBER- APRIL SCHEDULE

### TOURS & ECO-STATIONS

#### MONDAYS

TOUR | Walk in the Gardens | 10am, 12pm & 2pm

TOUR | Birds of Tohono Chul | 8:30am

ECO-STATION | Winged Things | Overlook | 11am to 1pm

#### TUESDAYS

TOUR | Walk in the Gardens | 10am, 12pm & 2pm

EVENT | Gallery Buzz | 11am

TOUR | Wildflowers: What's Bloomin'? | 10am

ECO-STATION | Ocean to Desert | Overlook | 11am to 1pm

#### WEDNESDAYS

TOUR | Walk in the Gardens | 10am, 12pm & 2pm

TOUR | Birds of Tohono Chul | 8:30am

EVENT | Birds of Prey - Night & Day | Oct. – Dec. | 11am to 1pm

Periodically 2nd & 4th Wednesday

Check Tohono Chul's website for the Birds of Prey - Night & Day schedule

ECO-STATION | Rocks & Ruins | Overlook | 11am to 1pm

#### THURSDAYS

TOUR | Walk in the Gardens | 10am, 12pm & 2pm

EVENT | Gallery Buzz | 11am

TOUR | Wildflowers: What's Bloomin'? | Mar – Apr | 10am

ECO-STATION | Desert Chow | Overlook | 11am to 1pm

#### FRIDAYS

TOUR | Walk in the Gardens | 10am, 12pm & 2pm

TOUR | Birds of Tohono Chul | 8:30am

TOUR | Connecting Plants and People | 11am

EVENT | Reptile Ramble | Overlook | mid-Aug – mid-Nov | 10am

Check Tohono Chul's website for the Reptile Ramble schedule

ECO-STATION | Creepy Crawlies | Overlook | 11am to 1pm

#### SATURDAYS

TOUR | Walk in the Gardens | 10am, 12pm & 2pm

TOUR | Birds of Tohono Chul | 8:30am

TOUR | Wildflowers: What's Bloomin'? | Mar – Apr | 10am

TOUR | Butterflies and their Plants | 11am

TOUR | Desert Landscaping | 9am

ECO-STATION | Plants and People | Overlook | 11am to 1pm

#### SUNDAYS

TOUR | Walk in the Gardens | 10am

TOUR | Art in the Gardens | 12pm

TOUR | Butterflies & Their Plants | 11am



**Tohono Chul**  
GARDENS • GALLERIES • BISTRO

7366 N. PASEO DEL NORTE, TUCSON, AZ 85704  
520.742.6455 | WWW.TOHONOUCHUL.ORG



#### HOURS:

Gardens | 8am – 5pm

Garden Bistro | 8am – 4:30pm

Exhibits, Shops & Greenhouse | 9am – 5pm

Closed New Year's Day, 4th of July, Thanksgiving & Christmas