

SPRING | 2023

DESERT CORNER JOURNAL

TOHONO CHUL'S NEWSLETTER



INSIDE THIS ISSUE

P.2 We're Still Here!

P.3 Members' Reception

P.4 Exhibitions 2023

P.5 Corporate Member Spotlight

P.6 Wildlife Camera Action

P.7 Free Admission Days

P.8 Jazz Under the Stars

P.8 Chillin at the Chul

P.8 Monsoon Madness

P.9-10 Spring/Summer Calendar

P.10 Got Milkweed?

P.11 Children's Museum Oro Valley

BACK Weekly Happenings

Visit us: tohonochul.org



Tohono Chul
GARDENS • GALLERIES • BISTRO



Tohono Chul Executive Director, Jamie Maslyn-Larson

WE'RE STILL HERE: RESPECTFULLY ENGAGING WITH THE NATIVE AMERICAN COMMUNITY

A NOTE FROM GABRIELLA CÁZARES-KELLY

Last summer for Bloom Night, I hosted our first Instagram Live video, during which I spoke a land acknowledgement recognizing that Tohono Chul is on unceded lands of the Tohono O'odham and Yoeme tribes. The next day, I received a youtube video link from Gabriella Cázares-Kelly, Pima County Recorder and the first Native American elected to Pima countywide office, where she shared the correct pronunciation of her tribe, Tohono O'odham. Gabriella is asked for the pronunciation of her tribe so frequently that she has it printed on the back of her business cards.

Grateful for her instruction and curious about her leadership path, we met for coffee last fall. She has an infectious passion for democracy, teaching people about her tribe, and I also learned that she was married at Tohono Chul! I asked (more like pleaded) Gabriella to please write for our Journal on any topic of choice. Here are her words, uninterpreted and uninterrupted.

When I first started engaging in community organizing in Tucson, I was surprised by how often I was told “I’ve never met a Native American,” usually followed by a barrage of questions: “What tribe are you from?” “Is it disrespectful to say ‘tribe’?” “Do you live on the reservation?” “Is the word ‘reservation’ offensive?”

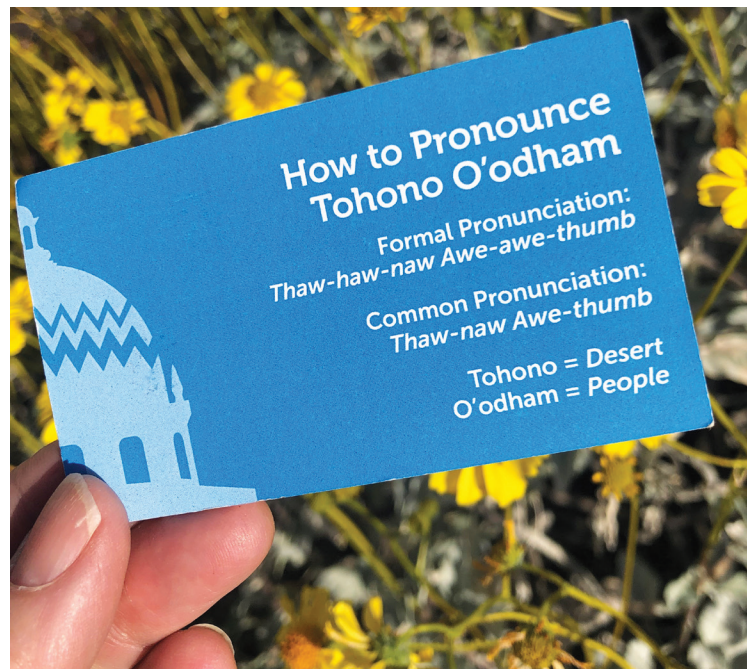
I, myself, usually only have one question in return: What do you mean you’ve never met a Native American? We’re everywhere! This is Arizona!

I’m from the Tohono O’odham Nation. We have the second largest reservation in the country. It’s nearly the size of Connecticut, but most people have no idea we are here. If you have visited Tohono Chul’s lovely grounds, you have been on our traditional lands. In fact, you have spoken our language: the names Tohono Chul, Tucson, and even Arizona come from the Tohono O’odham language!

Arizona is home to 22 distinct tribal nations. More than 25% of Arizona is tribal land. There are 574 federally recognized tribes across the United States. At one time in our history, we would not have been allowed to leave our own reservations without permission, but those days are gone. You can now find Native Americans all over the country and all over the world.

Sometimes people are so excited to meet me, a visibly Native American person, that they often expect me to teach them about the history of my tribe, other tribes, languages, cultures, belief systems, or traditional plants. Suddenly, my mere presence transforms the world around me into a makeshift “Native Americans 101” classroom and the questions keep coming and coming. This has happened to me while grocery shopping, flying on a plane, riding the elevator, and just standing on the sidewalk.

In these short interactions with people unfamiliar with my community, I can see them struggling with everything they thought they knew about Native Americans. First, of course,



is the realization that we still exist! Next, is usually the fact that we’re a part of the modern world. Then of course, that we have interests outside of simply existing as a Native American. Sometimes people are so challenged by these ideas that I have to tell them, “I’m a 21st Century Native. I live in a house in Northwest Tucson. I’m a voting nerd. I like Star Trek. I’m on Twitter.”

So how do you learn more about our community? Like you would with anything you are interested in, I first

recommend doing some research. Google “Whose lands are you on?” to find the names of your local tribes. If you’re visiting another state, find out the name of the local tribes before you go. See if there are museums or cultural centers you can visit. Another really helpful thing to do is follow Native American content creators on social media. We are diverse and have different perspectives. We aren’t just historians; we’re also artists, scientists, and politicians. We have many things to say and we’re already saying them—it’s just up to you to listen.

Lastly, I encourage you to share spaces with us in person. Visit our businesses, go to our events. Sometimes people worry about whether they are allowed to go to Native American events. If it is closed to the general public, it will say that on the flyer. Otherwise, you’re good to go—you just have to remember that you’re a guest. Guest rules apply, like they do anywhere else.

Just like learning about the beautiful Sonoran Desert, you aren’t going to learn everything about the Native American community all at once. You first read articles, books, and websites, and learn the differences between hummingbirds, quails and roadrunners. You learn about the different species of plants and the varieties of cacti. You learn the seasons of the desert; the changes in temperature and the heaviness of the clouds. You don’t learn everything about the Sonoran Desert by interrogating the hummingbirds or by dissecting an ocotillo.

Instead, you sit with patience. You listen, you watch, you wait. You come back, again and again.

Recorder Gabriella Cázares-Kelly was elected to serve her 4-year term in 2020. Her office is responsible for Voter Registration, Early Voting and Document Recording. She is the first Native American to hold an elected county-wide office in Pima County. She is a former educator and community organizer. She has written pieces in Colorlines, The Huffington Post and the UCLA Law Review. @GabriellaCKelly



Dancers at the WA:K Pow Wow by San Xavier Mission. Photo by James S. Wood, Arizona Daily Star



Members taking in the beautiful sounds of Gamelan Dewi Malam at last year's reception.

MEMBERS' RECEPTION

**2023 Arbor Day, State of the Garden Address:
Saturday | April 29 | 10am - 1pm
FREE for Members
General Public | Regular Admission**

As the spring sun begins to warm the Sonoran Desert, Tohono Chul invites you to join us in celebrating Arbor Day on Saturday, April 29th, from 10am to 1pm.

Our State of the Garden address will provide an exciting opportunity to hear from our Executive Director about the future plans for Tohono Chul and how we aim to beautify, diversify, and address the climate concerns facing the region.

A variety of tables will be set up, featuring information about our activities and programs, as well as displays from our local partners and vendors. Attendees can also enjoy live music in the performance garden, delicious food & drinks from our bistro, and much more.

SCHEDULE:

9am: New Member's Tour

10am: Event starts

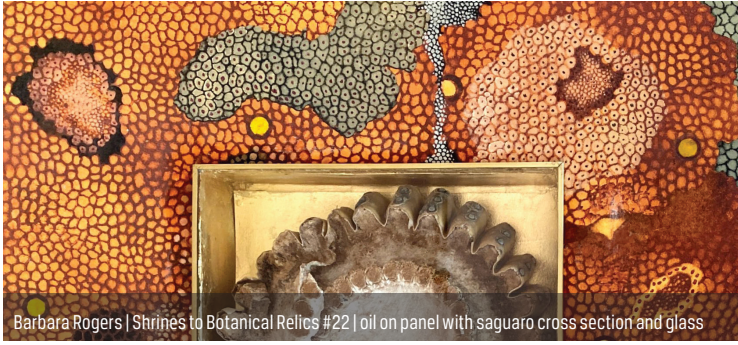
11am: State of the Garden Address

11:30am to 1pm: Live music in the Performance Garden

1:00pm: Event finishes



EXHIBITIONS 2023



Barbara Rogers | Shrines to Botanical Relics #22 | oil on panel with saguaro cross section and glass



Kate Breakey | Tumbleweed, Sandario Road | archival pigment print with hand-colored oils + pencil



Gavin Hugh Troy | Formless Into Form | pencil and acrylic on canvas



C.J. Shane | Desert Rain | mixed media on canvas



Keith Marroquin | The Effect of Wind on Sand | archival pigment print

KATE BREAKEY AND BARBARA ROGERS PRESCIENCE REMAINS

Main Gallery | through May 10, 2023

Prescience Remains communicates the strength of character and vision Tucson artists and icons Kate Breakey and Barbara Rogers bring to this world. Both artists have created bodies of work that recognize and exalt the castaway, celebrating the ineffable wonder and beauty they draw from nature while confidently looking forward, steadfast in the belief that beauty is found everywhere, moves in many directions, and possesses many meanings, to the benefit of us all.

FEATURED ARTIST: GAVIN HUGH TROY

Welcome Gallery | through May 10, 2023

One of downtown Tucson's longest-running artists, Gavin Hugh Troy has been a fixture since he moved here in 1998. Prolific – Troy allows every experience to filter into his creative process. Resourceful with materials and moving through diverse subject matter, Troy's work is fueled by his endless imagination and possesses a lyrical brilliance that takes the viewer to another place.

10 X 10 | A FUNDRAISER

Entry Gallery | through May 28, 2023

An invitational exhibition and fundraiser that presents, on a small scale, the many artists who make Tohono Chul such a unique experience. 10 x 10 features a wide range of sculpture and paintings, photographs and mixed media works no larger than 10 inches in any dimension - all priced at \$100.

THE EXOTIC SUBLIME

Main Gallery | May 18 - August 8, 2023

Reception with the Artists: May 18, 5:30 to 8:00pm

The romantic Sonoran landscape is examined - from arm's length, from distant vistas, from out of this world - telling vivid and cautionary tales of what this place used to be with what will become of this place. The voice in between, the creative resolve, forms a current into the odd and wondrous grandeur of The Exotic Sublime.

QUEEN OF THE NIGHT

Entry Gallery | June 2 - July 30, 2023

Bloom Night is coming! To celebrate the beloved *Peniocereus greggii* or night-blooming cereus, **Queen of the Night** unveils magical and mysterious pieces from Tohono Chul's Permanent Collection as well as and our creative community of artists. All Hail the Queen!



Visitors enjoy pointing out the early spring arrivals like the cheery Mexican Gold Poppies, which are wildflowers native to arid areas of the Southwest, and great at attracting pollinators.

CORPORATE MEMBER SPOTLIGHT:

DISCOVERING TOHONO CHUL: A JOURNEY THROUGH BEAUTY, HISTORY, AND CONSERVATION

Nestled in the heart of Sonora, Mexico lies the small colonial town of Alamos. Known for its vibrant flora, cobblestone streets, and colonial architecture, Alamos is a designated "Magical Town" in Mexico, recognized for its natural beauty, historical relevance, cuisine, and hospitality.

I had the opportunity to visit Alamos for a wedding and was immediately enchanted by its charm. It was there that my love for nature and gardening was sparked, specifically because of Adeniums, the stunning desert flowers that bloom in a variety of colors.

Years later, I was introduced to Tohono Chul, a botanical garden dedicated to the preservation of the Sonoran Desert and its unique ecosystem. The Old Pueblo Group at Morgan Stanley has a number of clients who have supported Tohono Chul in the past, either financially or through their time,

and it was no surprise that I was immediately drawn to their mission and vision.

When you visit Tohono Chul, you're able to immerse yourself in the beauty of the Sonoran Desert and learn about the importance of conservation. We admire the staff's dedication to making a positive impact on our community, something we also aspire to do as financial advisors. Our passion for education and empowering individuals to make informed decisions about their wealth is a cornerstone of our practice.

That's why our team is thrilled to partner with Tohono Chul and make a lasting impact on our community.

At the Old Pueblo Group at Morgan Stanley, we aim to be a source of education and support for our clients. If you have any questions or would like a second opinion about your finances, please do not hesitate to reach out to our office.

Fernando Arreola | Financial Advisor, The Old Pueblo Group at Morgan Stanley | 520-745-7068

Frank Vidal, Philanthropy Manager would be happy to share with you all the benefits of being a corporate member: fvidal@tohonochul.org



Our resident mother bobcat leads her kittens through the gardens to learn new skills.

WHERE THE WILD THINGS ARE TOHONO CHUL'S WILDLIFE CAMERA CREW

When most people think of Tohono Chul, they probably remember the bountiful prickly pear or the sprawling saguaros. While Tohono Chul has established itself as a beautiful botanical garden, it is also a desert preserve and haven for many different animal species.

The Tohono Chul Wildlife Camera Crew, consisting of a small group of docents and volunteers, is an entirely volunteer-led project that monitors wildlife cameras around the garden. There are six wildlife cameras around our 49-acres, most of them placed to catch wildlife activity in the arroyos of the natural desert areas. There are also two positioned off the trail in the central garden around the water sources like the Riparian Area.



The camera captured this couple of coyotes getting to know each other during mating season.

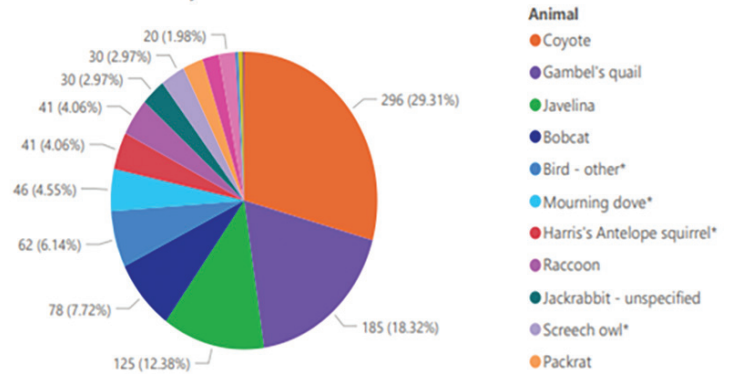
Twice a month the Wildlife Camera Crew gathers and replaces the SD cards from each camera, changes batteries when needed, and meet to go through each photo on the camera's SD card. The crew goes through all the photos and documents any animal detected that they are tracking, including the location, date, and time. Due to their abundance, quail, rabbits, and doves are not tracked in Tohono Chul's project, but if there is a good picture of one of these species the group keeps it.

The wildlife cameras are motion-activated and take pictures day and night. Not only do animals trigger the motion sensor, but so do branches on a windy day or a guest visiting the garden. Sometimes an SD card can have as many as 2,000 images!

Out of all the species that Tohono Chul is tracking, coyotes are the mostly commonly detected on the cameras, with javelinas and bobcats being seen on all six cameras as well. While only one skunk has ever been recorded on camera, raccoons have been spotted near the water sources on several occasions.

The chart below shows seven months of observations from fall 2019 through spring 2020.

Count of Animal by Animal



When asked why this project is so important, Tohono Chul docent Gerri Conn said, "there are two reasons: to track the fauna of Tohono Chul as a desert preserve, to see their health, population, and occurrence over time, but to also help with the larger study by the Sky Island Alliance that has the same goals". Carolyn Thomas, another Tohono Chul docent, sends pictures and information gathered by the wildlife camera crew to the Sky Island Alliance for their Fotofauna project.

The Sky Island Fotofauna Project is a community science project across the Sky Island region that involves volunteers submitting a checklist of what species they detect on their wildlife camera. This project is tracking 44 different species, including mammals, birds, and reptiles, and their presence or absence in the area over time. The results of this project help to show the effects of urban development and seasonal changes on these species, as well as helping to monitor their range limitations.

For more information on their project, please visit skyislandalliance.org.

UPCOMING FREE ADMISSION DAYS:



NATIONAL PUBLIC GARDENS DAY

Friday | May 12 | Free Admission

Help promote awareness of the beauty of the desert by bringing family or a new friend! This is a great way to help others learn and appreciate the value of our home.

GO PUBLIC GARDENS COMMUNITY DAY

Saturday | May 13 | Free Admission

Join us for a fun family-friendly day celebrating public gardens and the community! In addition to strolling the garden, guests can enjoy entertainment like Mr. Nature's Music Garden, a bilingual story time, and an original play performed by our own volunteer pantomime theater group, The Desert Players. Several community partners will have information on their organization and feature a fun children's activity. Kids can also take home their own seed in a biodegradable container, paint a Mother's Day card with a paintbrush made of yucca, or make a habitat for native bees! Whether you're attending with your children or coming alone or with a friend, there is something for everyone at Community Day!



MOTHER'S DAY SUNDAY | MAY 14

Free admission for mothers and grandmothers

FATHER'S DAY SUNDAY | JUNE 18

Free admission for fathers and grandfathers

SPECIAL EVENTS:



BLOOM WATCH BEGINS MAY 16

Special Evening | Watch for announcement | Admission

Each year, for one evening only between May and July, Tohono Chul invites visitors from around the world to experience the majestic mass blooming of the Queen of the Night! The Night Blooming Cereus, known by its scientific name, *Peniocereus greggi*, has a very unusual flowering cycle. Normally looking like a spindly little stick for most of the year, this member of the cactus family opens up in aromatic glory for just one special night. To get on the list for updates and information please visit our website and follow us on social media.

Read more here: tohonocho.org/bloom-watch



SONORAN CINEMA CONTINUES

Friday Nights | April 21 | May 19 | Tickets online

Family movie night is here at Tohono Chul! Gather your family and friends, grab the popcorn, and join us for your family film favorites at Sonoran Cinema at Tohono Chul this spring! Once the heat of the summer has passed, there will be another round of films being offered in the fall, too. Get information on film schedule and ticket pricing on our website. Visit: tohonocho.org/sonoran-cinema



JAZZ UNDER THE STARS

Saturdays | 5-8pm | The Bistro
Continues in April | Free

Tohono Chul has teamed up with The Tucson Jazz Festival, to book some of Tucson's most talented jazz performers for this brand-new concert series that started February 25th. For music lovers of all ages, join us for a night under the stars celebrating our new collaboration with The Tucson Jazz Festival. Taking place at the Garden Bistro from 5pm-8pm Saturday nights, enjoy food, drinks, and music. Get a sneak peek of the unique menu items being offered just for this event on our website. We will be announcing more performers on social media so stay tuned!



BEST OF THE NORTHWEST

We are thrilled to be recognized in the *Northwest Explorer's* 2023 Best of the Northwest! Tohono Chul was voted Best Place to Take Visitors and was Reader Recommended for Best Art Gallery, Best Nursery/Garden Center, and Best Event/Festival for Holiday Nights! It's because of YOU that we can honor the wishes of Dick and Jean Wilson, the founders of Tohono Chul, by bringing nature, art, and culture to the community. Thank you to all who voted!



CHILLIN AT THE CHUL

Fridays and Saturdays | 5:00PM – 9:00 PM
Starting on May 26 through Sept 2 | Free Admission

Summer is almost here! Want a way to beat the heat? Come chill with us at Chillin at the Chul, a summer music and food series that is sure to put the cool back in your summer. Sit back, grab a drink, and relax under our beautiful ironwood trees while enjoying some of Tucson's finest local music. Saturdays are family friendly as we've partnered with the Children's Museum of Oro Valley to provide nature play to keep kids entertained while parents relax. We will be presenting 15 weeks of summer fun, every Friday and Saturday, from 5 - 9 PM beginning 5/26 through 9/2. You won't want to miss this opportunity to come chill among nature's finest.



2023 MONSOON MADNESS SALE

Friday | July 28 | 3:00 PM – 9:00 PM | Free Admission
Saturday | July 29 | 8:00 AM -1:00 PM | Free Admission

Wander the shady paths of the Sonoran Seasons Garden to shop wonderfully weird and wild plants! Arizona's renowned growers of cacti, succulents, and Sonoran natives come out of their greenhouses to offer an incredible selection of sublimely diverse and curious plants. Learn about the care and keeping of these desert beauties with the seldom seen legends of arid plant horticulture. More treasures will be found in the Pavilion where local Tucson ceramic artists will be showcasing their handmade pots and garden wares. Take the time to enjoy live music and food-truck refreshments while taking in the Sonoran summer evening in all its wild beauty. Celebrate the Sonoran desert with us!

Cut along the dotted line and post on your refrigerator for a quick glance at upcoming events.

SPRING 2023 SCHEDULE

Visit tohonochul.org to register for classes or buy tickets to special events.

APRIL 2023 EVENTS

| | | | |
|---|---------|-----------------------|-----------|
| Pocket Sketching Refresher | Class | April 13-15 | 10am-4pm |
| Annual Members' Reception State of the Garden | Event | April 29 Saturday | 10am-1pm |
| Design a Talavera Pot | Class | April 20 | 10am-12pm |
| What in the World is Environmental Art? | Class | April 21 | 1 -2:30pm |
| Sonoran Cinema "A Bug's Life" | Event | April 21 | 5:30-9pm |
| City Nature Challenge BioBlitz Days | Event | April 30 | 9am-5pm |
| Jazz Under the Stars | Event | April 22 and April 29 | 5pm-8pm |
| Prescience Remains Main Gallery | Exhibit | Through April 27 | 9am-5pm |
| Gavin Hugh Troy Welcome Gallery | Exhibit | Through May 10 | 9am-5pm |
| 10 X 10: A FUNDRAISER Entry Gallery | Exhibit | Through May 28 | 9am-5pm |

MAY 2023 EVENTS

| | | | |
|---|---------|----------------|-------------|
| Papier Mâché Javelina | Class | may 9-18 | 9:30am-12pm |
| Mosaic Bird Feeder | Class | May 10 | 10am-3pm |
| Lashed, Wrapped, & Woven | Class | May 12 | 9am-4pm |
| Bloom Watch begins | Event | May 16 | 6pm |
| Surviving Summers in Territorial Tucson | Class | May 19 | 1-2:30pm |
| Public Gardens Days | Event | May 12-May 14 | 9am-5pm |
| Community Day | Event | May 13 | 9am-1:00pm |
| Jazz Under the Stars | Event | May 13 | 5pm-8pm |
| Sonoran Cinema "Moana" | Event | May 19 | 6:30pm |
| Chillin at the Chul | Event | May 26 | 5-9pm |
| The Exotic Sublime Main Gallery | Exhibit | May 18 - Aug 8 | 9am-5pm |
| 10 X 10: A FUNDRAISER Entry Gallery | Exhibit | Through May 28 | 9am-5pm |

Cut along the dotted line and post on your refrigerator for a quick glance at upcoming events.

SUMMER 2023 SCHEDULE

Visit tohonochul.org to register for classes or buy tickets to special events.

JUNE 2023 EVENTS

| | | | |
|---|---------|-----------------------|---------|
| Queen of the Night Entry Gallery | Exhibit | Through July 30 | 9am-5pm |
| The Exotic Sublime Main Gallery | Exhibit | Through Aug 8 | 9am-5pm |
| Selections from the Roy J.Kurtz Collection of American Indian Art Welcome Gallery | Exhibit | Through Aug 8 | 9am-5pm |
| Chillin at the Chul | Event | Fridays and Saturdays | 5-9pm |

JULY 2023 EVENTS

| | | | |
|---|---------|-----------------------|---------|
| Queen of the Night Entry Gallery | Exhibit | Through July 30 | 9am-5pm |
| The Exotic Sublime Main Gallery | Exhibit | Through Aug 8 | 9am-5pm |
| Selections from the Roy J.Kurtz Collection of American Indian Art Welcome Gallery | Exhibit | Through Aug 8 | 9am-5pm |
| Chillin at the Chul | Event | Fridays and Saturdays | 5-9pm |



GOT MILKWEED? YOU CAN BE A WAYSTATION!

Each fall, hundreds of millions of monarch butterflies migrate from the United States and Canada to mountains in central Mexico where they wait out the winter until conditions favor a return flight in the spring. The monarch migration is truly one of the world's greatest natural wonders yet it is threatened by habitat loss. But, you can easily play an important role in helping to keep monarchs alive and well by planting milkweed seeds and creating your own monarch waystation! No seeds? No problem.

Make a minimum \$75 donation to Tohono Chul to receive your special seed packet! Your packet will include Milkweed and other host plant seeds, a "Got Milkweed" yard sign, a bumper sticker, and an information pamphlet on how to plant your seeds. Want to know all the details? Please visit the GotMilkweed page on our website to get your packet! <https://tohonochul.org/got-milkweed>

CHILDREN'S MUSEUM ORO VALLEY OPENS AT TOHONO CHUL BECOME A MEMBER!

The Children's Museum Oro Valley (CMOV) opened at Tohono Chul on January 3, 2023. Children's Museum Oro Valley at Tohono Chul (CMOV@TC) is a groundbreaking collaboration which is giving visitors the best of two of Tucson's iconic attractions at one destination. Just 3 months in, and we have already seen thousands of folks visit the new CMOV@TC location, introducing a whole new generation to the wonders and uniqueness of our Sonoran Desert.

The experience of CMOV has been transformed with the relocation, with indoor and outdoor nature-based exhibits, activities that change daily and with the seasons, and educational programming for kids and families. Embedded within the gardens, CMOV@TC offers families a complete garden experience. You will be able to use your Children's Museum membership to access the Children's Museum Oro Valley at Tohono Chul through June 2023. After that, we hope you will become a Tohono Chul member and continue to have access to the gardens and the Children's Museum at Tohono Chul all year long. Family Memberships allow 2 adults and all children or grandchildren (17 and under) in their household to attend, any time throughout the year, FREE

"Tohono Chul has a huge role in closing the nature-deficit gap by letting kids be wild explorers of our gardens," said Tohono Chul Executive Director Jamie Maslyn Larson. "I am thrilled that CMOV's incredible programs and educators accelerates our goal to proactively welcome families here to experience the wonder of the Sonoran Desert. We can hardly wait to see the next generation of nature-lovers grow up at Tohono Chul!"

CMOV is open Tuesday - Sunday from 9:00am-1:00pm with access to all outdoor exhibits available during regular Tohono Chul hours.

More: tohonochul.org/cmova-tohono-chul



Children can engage in a number of gardening explorations such as planting and watering.



There are plenty of opportunities for quality up-close time observation time with desert plants.



Traveling through the gardens along the paths is part of the fun of going to the Children's Museum.



Tohono Chul

GARDENS • GALLERIES • BISTRO

7366 N. PASEO DEL NORTE, TUCSON, AZ 85704
520.742.6455 | WWW.TOHONCHUL.ORG

HOURS:

Gardens | 8am - 5pm

Garden Bistro | 8am - 4pm

Exhibits, Shops & Greenhouse | 9am - 5pm

Closed New Year's Day, 4th of July, Thanksgiving & Christmas

NON PROFIT ORG.

US POSTAGE

PAID

TUCSON, AZ

PERMIT NO. 1688

WEEKLY HAPPENINGS AT TOHONO CHUL

TOURS & ECO-STATIONS 2023



MONDAYS

TOUR | Birds of Tohono Chul | Year-round: 8:30am

ECO-STATION | Winged Things | Overlook |

May-Sept: 9am to 11am | Oct-Apr: 11am to 1pm

TOUR | Walk in the Gardens |

May-Sept: 10am | Oct-April: 10am, 12pm & 2pm

TUESDAYS

ECO-STATION | Ocean to Desert | Overlook |

May-Sept: 9am to 11am | Oct-Apr: 11am to 1pm

TOUR | Walk in the Gardens |

May-Sept: 10am | Oct-Apr: 10am, 12pm & 2pm

TOUR | Wildflowers: What's Bloomin'? | Mar-Apr: 10:30am

EVENT | Gallery Buzz | Oct-Apr: 11am

WEDNESDAYS

TOUR | Birds of Tohono Chul | Year-round: 8:30am

ECO-STATION | Rocks & Ruins | Overlook |

May-Sept: 9 am to 11 am | Oct-Apr: 11 am to 1 pm

TOUR | Walk in the Gardens |

May-Sept: 10am | Oct-April: 10am, 12pm & 2pm

THURSDAYS

ECO-STATION | Desert Chow | Overlook |

May-Sept: 9 am to 11 am | Oct-Apr: 11 am to 1 pm

TOUR | Walk in the Gardens |

May-Sept: 10am | Oct-April: 10am, 12pm & 2pm

TOUR | Wildflowers: What's Bloomin'? | Mar-Apr: 10:30am

EVENT | Gallery Buzz | Oct-Apr 11am

FRIDAYS

TOUR | Birds of Tohono Chul | Year-round: 8:30am

ECO-STATION | Creepy Crawlies | Overlook |

May-Sept: 9am to 11am | Oct-Apr: 11am to 1pm

TOUR | Walk in the Gardens |

May-Sept: 10am | Oct-April: 10am, 12pm & 2pm

TOUR | Connecting Plants and People | Year-round: 11am

EVENT | Reptile Ramble | Overlook |

mid-Aug thru mid-Nov: 10am | Mar-May: 10am

Check Tohono Chul's website for the Reptile Ramble schedule

SATURDAYS

TOUR | Birds of Tohono Chul | Year-round: 8:30am

TOUR | Desert Landscaping | Year-round: 9am

ECO-STATION | Plants and People | Overlook |

May-Sept: 9am to 11am | Oct-Apr: 11am to 1pm

TOUR | Walk in the Gardens |

May-Sept: 10am | Oct-April: 10am, 12pm & 2pm

TOUR | Butterflies and their Plants | Year-round: 11am

TOUR | Wildflowers: What's Bloomin'? | Mar-Apr: 10:30am

SUNDAYS

TOUR | Walk in the Gardens |

May-Sept: 10am | Oct-April 10am, 12pm & 2pm

TOUR | Butterflies & Their Plants | Year-round: 11am

TOUR | Art in the Gardens | Oct-Apr: 12pm