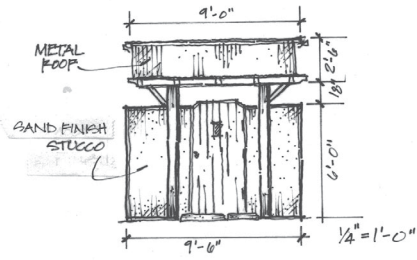


# Meditation Garden



Zen gardens are designed to capture the essence of nature, distilling it to its most basic

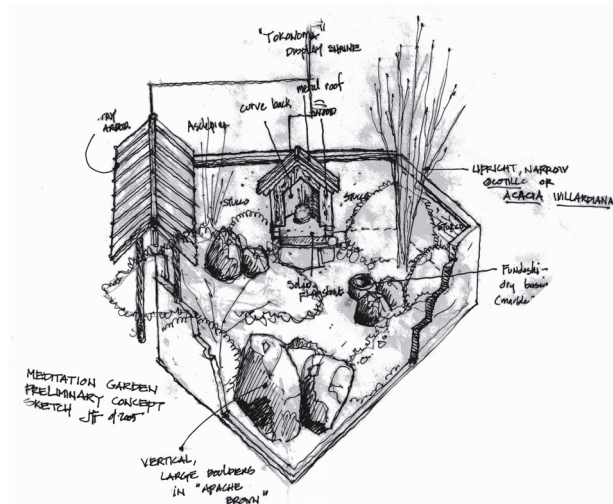
elements – rock, water, earth, and sky – a tranquil space far from the strife of a troubled world. In a small space such as this, the massive boulders provide a connection to the bones of the earth, invoking a stillness that grounds the visitor. The plantings represent living things in their abstract, a suggestion of diverse ecosystems without the distractions of too much color or too many shapes. In a space surrounded by walls, the changing patterns of light and shadow, as well as the color of the sky overhead, become a predominant element in the garden.

One ideal of a Zen garden is adaptability, to reflect the region in which it is placed, rather than be an imitation of a garden from another environment. Therefore, a Zen garden appropriate for Tucson will look very different from its model in Kyoto.

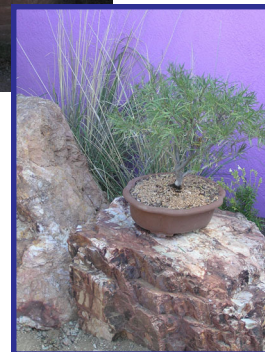


This version incorporates adaptations of traditional elements such as the *tokonoma*, a small shrine found in Japanese teahouses and homes. Both sacred and aesthetically beautiful, it is used

to display calligraphy or landscapes and floral arrangements selected to reflect the changing seasons. The flagstone bench is placed in a protected position with a view of the shrine and updates the *zabuton*, or meditation cushion. It invites contemplation, so take more than a moment, stop, sit, and just – be.



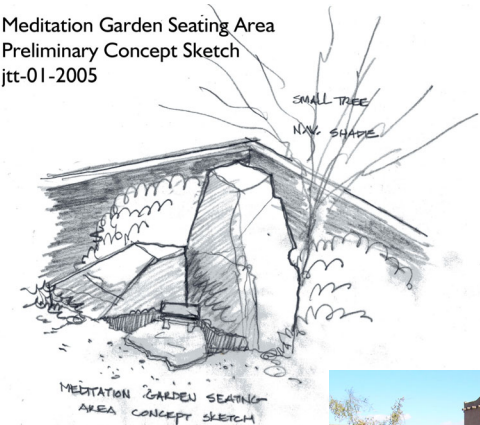
Meditation Garden-Preliminary Concept Sketch-jtt-01-2005



## Hardscape

- Concrete walls of 4x4x16 slump block (Old Pueblo Brown AZ Block 2000)
- Standing-seam metal-roofed wooden entry arbor with gate (Denali Green, Westerner Products)
- Wall color: *Lavender Sweater* (Dunn Edwards)
- Meditation bench and pavement of flagstone (Sedona Red, Tierra Stone)
- Specimen boulders (Tucson Mtn. stone, Walter J. Davis Rock Company)
- Stuccoed CMU wall (part of adjacent structure)
- Freestanding metal trellises (4'x8') of 4"x4" industrial metal mesh
- Flagstone *tokonoma* shrine
- Freestanding landscape lighting (FX Lighting)

Meditation Garden Seating Area Preliminary Concept Sketch jtt-01-2005



# Meditation Garden Plant List

Map Location	Botanical Name	Common Name(s)	Typical Height x Width	Landscape Use	Secondary Use	Lowest Water Use	Medium Water Use	Highest Water Use	TCP Greenhouse
2	Acacia willardiana	Palo blanco	20 x 10	T	A	L			✓
6	Agave lophantha	Holly agave	1 x 3	SU	A	L	M		✓
13	Amoruxia gonzalezii	No common name	1 x 1	P	WF		M		✓
36	Bouteloua curtipendula	Sideoats grama	3.5 x 1.5	G	A		M	H	✓
87	Fallugia paradoxa	Apache plume	4 x 5	SH			M	H	✓
99	Haemetoxylon brasiletto	Palo colorado	15 x 7	T	A		M	H	✓
113	Justicia californica	Chuparosa	5 x 8	SH		L	M		✓
133	Oenothera caespitosa	Tufted evening primrose	0.8 x 2	P	GC	L	M		✓
135	Parthenocissus quinquefolia	Hacienda creeper	15 x 15	V				H	✓
149	Plumbago scandens	Summer snow	4 x 4	GC	P		M	H	✓
169	Ruellia peninsularis	Baja petunia bush	4 x 5	SH		L	M		✓
181	Salvia greggi 'white'	White autumn sage	3 x 3	SH			M	H	✓
194	Solanum hindsianum	Sonoran potato bush	8 x 4	SH	CN	L	M		✓
197	Sporobolus wrightii	Alkalai sacaton	6 x 5	G	A	L	M	H	✓
206	Telosiphonia brachysiphon	White trumpet	1 x 3	GC	CN		M	H	✓



## Key

- A - accent
- B - bulb
- C - cactus
- CN - container
- F - fern
- G - grass
- GC - groundcover
- GT - grass/turf
- P - perennial
- PA - palm
- SU - succulent
- SH - shrub
- T - tree
- V - vine
- WF - wildflower
- ✓ - generally available in Tohono Chul Park Greenhouse

