

at the water's edge

The water's edge is alive with diversity

Such a rich variety of interconnected plant and animal life is associated with any riparian area, it would be nearly impossible to accurately duplicate such a complex community here. However, we have tried to recreate a little of what you might encounter 50mi/80.5km south of Tucson in Sycamore Canyon, at about 4000ft/1219m up in the Atascosa Mountains.

See if you can find the following plant species—look for tree shapes, leaf patterns, and distinctive flowers and fruits to test your naturalist skills, then check the ID sign at the base of each plant to see if you are right!



Arizona sycamore
Platanus wrightii



Netleaf hackberry
Celtis reticulata

Arizona or velvet ash
Fraxinus velutina



Yellow monkey flower
Mimulus guttatus

Arizona cypress
Cupressus arizonica

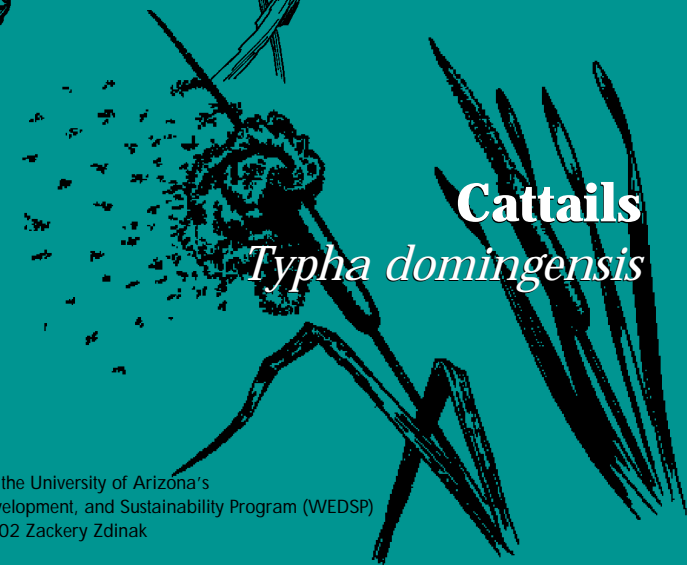
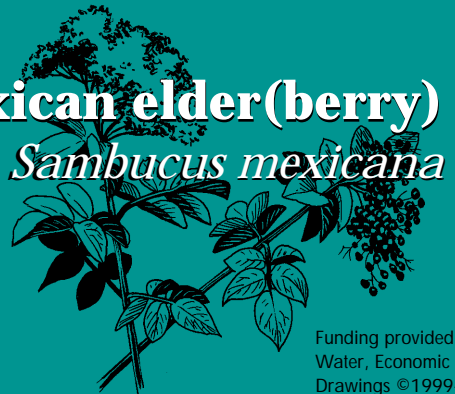


Canyon grape
Vitis arizonica



Arizona walnut
Juglans major

Mexican elder(berry)
Sambucus mexicana



Cattails
Typha domingensis